

Ignite Session for Land Management on the Kenai Peninsula Forum

Role of Land Trusts

David Wigglesworth

US Fish and Wildlife Service

March 7th, 2017

Partnership/Program

- **What do you do?** Land Trusts work with willing landowners to conserve habitat by accepting donations, purchase agreements, conservation easements
- **Mission:** Conserve, typically for public benefit, lands with significant natural, recreational and/or cultural values – in perpetuity
- **Partners:** Private land owners, Tribes, Native Corporations, State, local, Federal Government
- **Geographic scope:** 6 AK Land Trusts statewide: KHLT, GLT, BBHLT, Interior AK LT, SE AK Land Trust, AK Farmland Trust
Other “Kenai” groups: Conservation Fund, Moose Habitat, Inc.

What Gap Do You Fill?

- Presumably your partnership exists to fill a gap in services – what is it?
 - Clearinghouse for tools/incentives/assistance for landowners to conserve lands
 - Intermediary for voluntary habitat conservation actions and negotiations between government and private land owners
 - Enhance landowner understanding of habitat & ecosystem service values (assets) of his/her lands

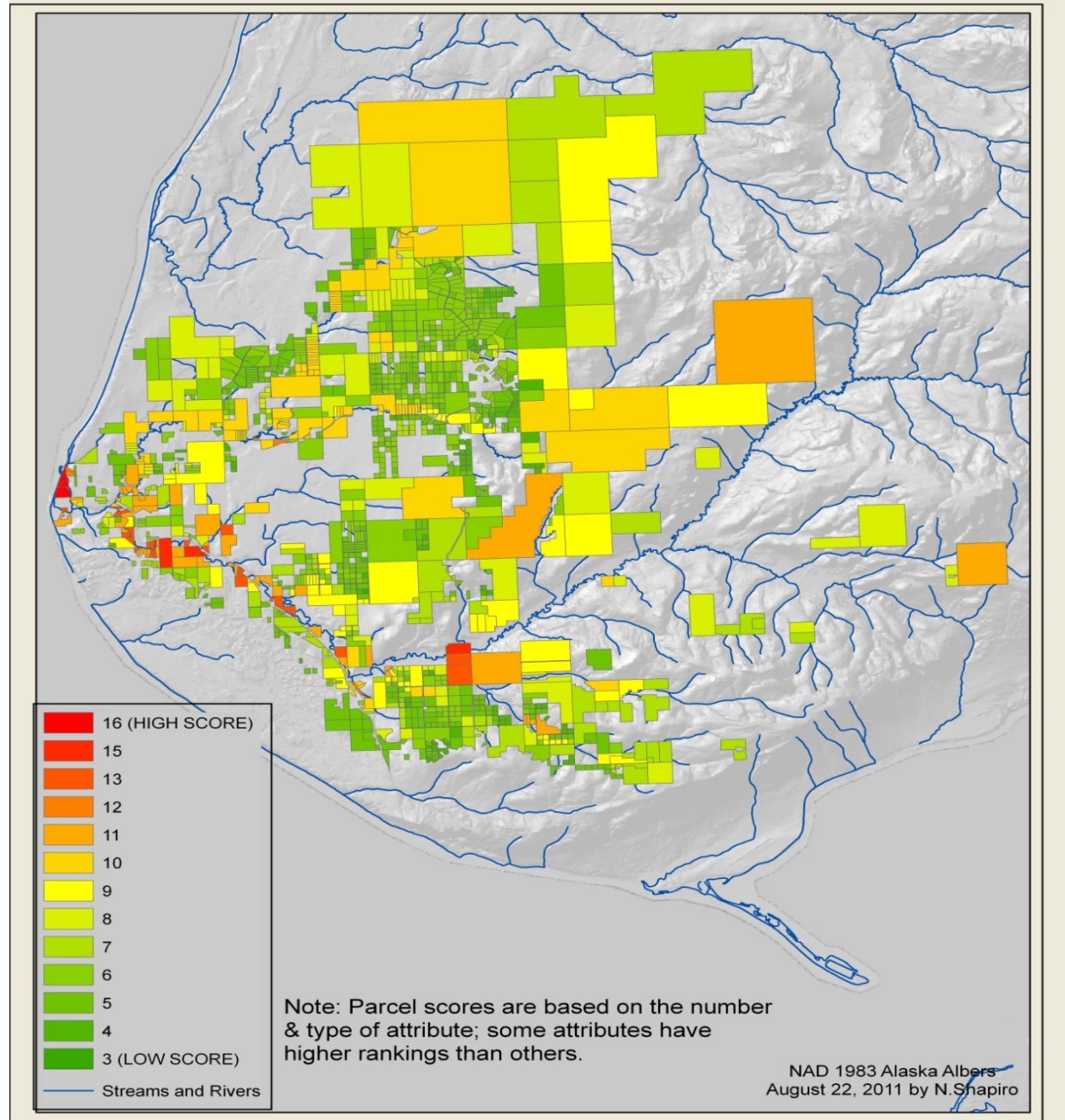
How do you fill gap?

- How do you work? How is work accomplished?
 - Geo-spatial analysis and asset mapping to identify lands with highest conservation/community values
 - Landowner outreach to provide information on ways to conserve habitat consistent with land owner interests (e.g. easements, purchase, donations)
 - Conduct baseline assessments, appraisals, other due diligence required of land transactions.
 - Directly manage lands or assist in setting up long term management framework

What planning process or document are you sharing at this meeting?

- For Kenai area:
 - KHLT has performed habitat mapping and prioritizations
 - Great Land Trust has performed spill-area habitat mapping and prioritization – inclusive of the KPB
 - This information can be a layer in other land use planning or build-out scenario planning
 - Datasets available by contacting land trust directly

Mapping example: Anchor River



Opportunities for and Barriers to Better Engagement and Leveraging Across Boundaries

- In general:
 - Consult with local land trust. Outstanding resource. Statewide land trusts do work together, as well
 - US FWS Coastal Program has long standing relationship with land trusts and partnership groups to identify and conserve important fish and wildlife habitat
 - Leveraging of resources to support conservation as an element of land use planning

Needs

- Are there information needs that could be addressed through shared inventorying and monitoring?
 - Sharing of datasets relating to community assets (trails, parks, recreation areas), as well as habitat, species, wetlands and other attributes can:
 - Enhance geospatial modeling for habitat prioritization
 - Provide information to support landowner outreach and communication (example: thermal imagery of cold water habitats important to fish)

Contact Information

- Your contact info:
 - 907-786-3925
 - David_wigglesworth@fws.gov
- Organization/agency website
 - www.kachemaklandtrust.org
 - Kachemak Moose Habitat, Inc.
 - www.greatlandtrust.org
 - www.conservationfund.org