

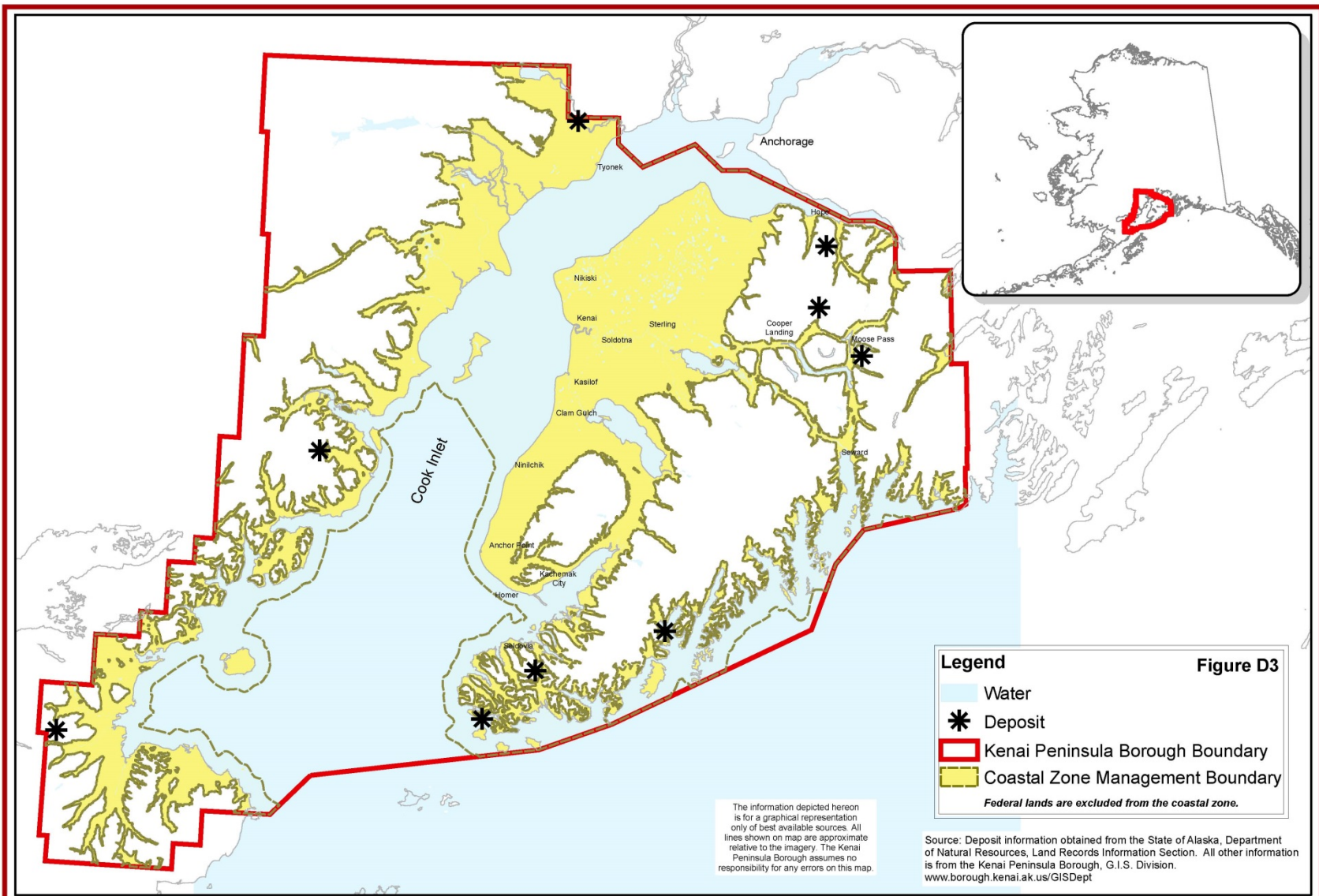
Ignite Session:
Land Management on the Kenai
Peninsula Forum

Kenai Peninsula Borough Coastal
Management Plan

Karyn Noyes
March 7th, 2017

KPB Coastal Management Plan adopted by ordinance in 2007, amended in 2008

- The Kenai Peninsula Borough Coastal Management Plan was developed to provide local information and policies that carry out the objectives of the Alaska Coastal Management Program.
- Coastal District Coordinator acts under the Planning Director and may receive direction from the Planning Commission
- Coastal District Coordinator encourages decision-makers and residents to use coastal management to identify areas appropriate for development, keep coastal resources healthy, and consider local input in state and federal decision-making
- The Coastal Zone extends landward to the 1000 foot elevation contour and seaward to the three-mile limit of state jurisdiction within KPB boundaries.



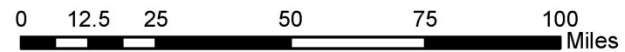
Legend

- Water
- Deposit
- Kenai Peninsula Borough Boundary
- Coastal Zone Management Boundary

Federal lands are excluded from the coastal zone.

Figure D3

SIGNIFICANT METALLIFEROUS LODE DEPOSITS IN THE KENAI PENINSULA BOROUGH



Funding for this publication was provided by the Alaska Coastal Management Program under the Coastal Zone Management Act of 1972, as amended in 1990 and 1996, administered by the Office of Ocean and Coastal Resource Management, National Oceanic and Atmospheric Administration, U.S. Department of Commerce.



DATE: JANUARY 31, 2006

Kenai Peninsula Borough Coastal Management Plan

The Plan provides:

- Local input and guidance to state and federal agencies involved in developing projects, issuing permits or managing land within the coastal zone
- Information and policies to assist the Borough in managing Borough land and making local decisions affecting coastal resources.

Our stakeholders are residents within the Coastal Zone, organizations, local governments, prospective applicants, and State and Federal Managers.

KPB Coastal Management Plan Components

- **Resource Inventory**
 - Physical Environment: soils, water, timber, energy
 - Fish and Wildlife Resources: commercial, subsistence, recreation, enhancement
 - Socioeconomic Data: land use, cultural sites, transportation
- **Resource Analysis**
 - Generalized Development Activities, Processes and Sensitive Resources: oil & gas, mining, transportation, forestry, agriculture
 - Impact Identification: pollution, wildlife population disturbances
 - Potential Development: local details on development identified above
- **Issues, Goals, Objectives, and Policies**
 - Consider the value of water- reliant uses in coastal development
- **Implementation**
 - Consistency reviews

Significant land management challenges

- The Alaska Coastal Management Program expired in 2011 and has been withdrawn from the federal Coastal Zone Management Act's program.
- Alaska is the only coastal state without a coastal management program.
- The Borough's plan relies on state standards that are no longer in effect.
- A formal review of the Borough's plan by the KPB Planning Commission is recommended every 10 years. The current Plan was adopted in 2008.

Opportunities for and Barriers to Better Engagement and Leveraging Across Boundaries

- New State administration may be open to revisiting Alaska Coastal Management

Contact Information

- Karyn Noyes, Resource Planner & Coastal District Coordinator
- knoyes@kpb.us, 907.714.2468
- <http://www.kenairivercenter.org/>
- <http://www.kenairivercenter.org/river-center/agencies/kpb-coastal-program>