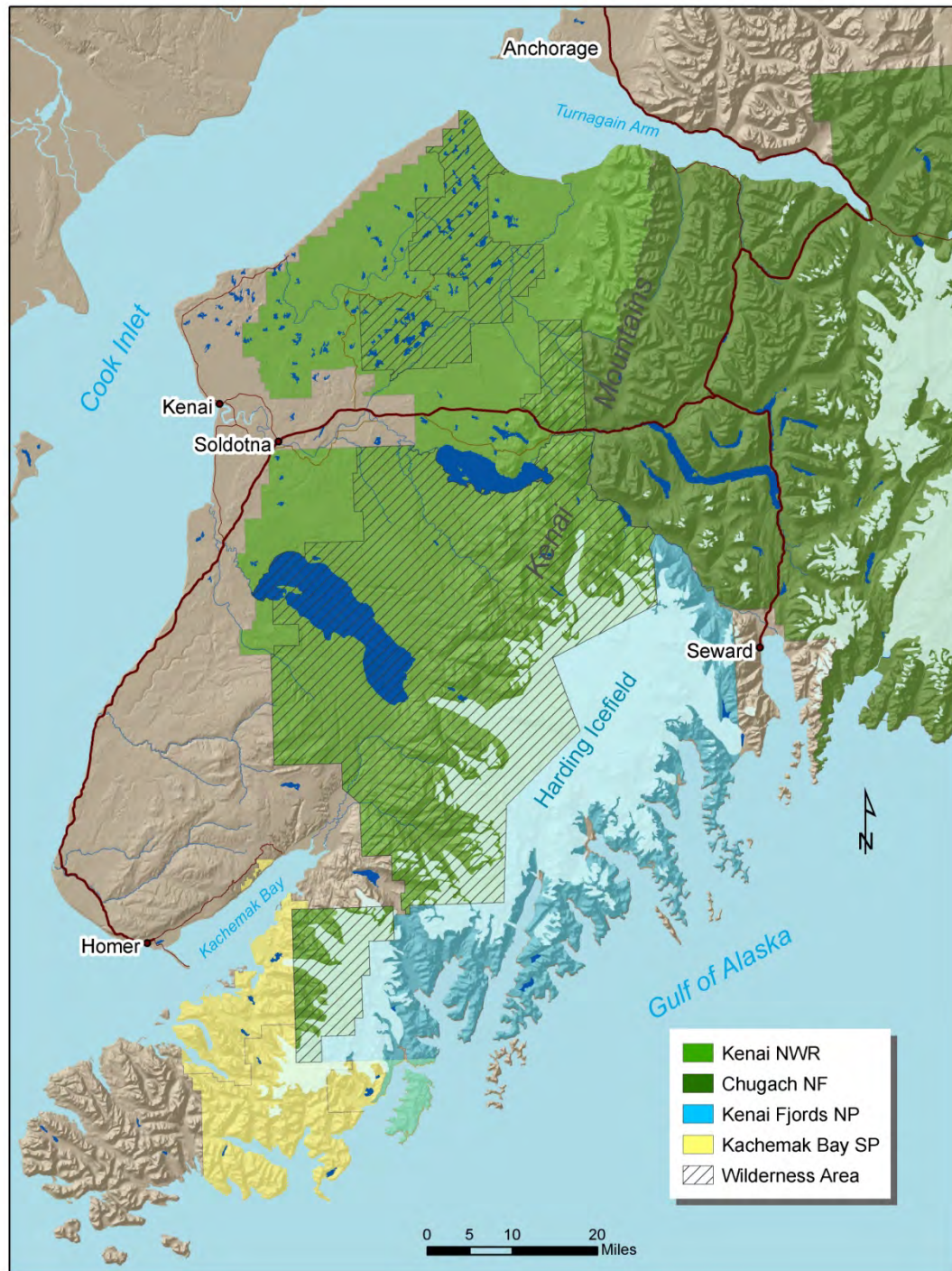


Land Management on the Kenai National Wildlife Refuge

John Morton





REFUGE PURPOSES

1980 ANILCA

- **conserve fish & wildlife populations and habitats in their *natural diversity* including but not limited to....**
- **fulfill international fish & wildlife treaty obligations**
- **ensure water quality and quantity**
- **opportunities for scientific research, interpretation, EE and land management training**
- **compatible fish & wildlife-oriented recreation**

OTHER REFUGE PURPOSES

1964 Wilderness Act

- secure an enduring resource of wilderness
- protect and preserve wilderness character
- leave them unimpaired for future use as wilderness

1997 Refuge Improvement Act

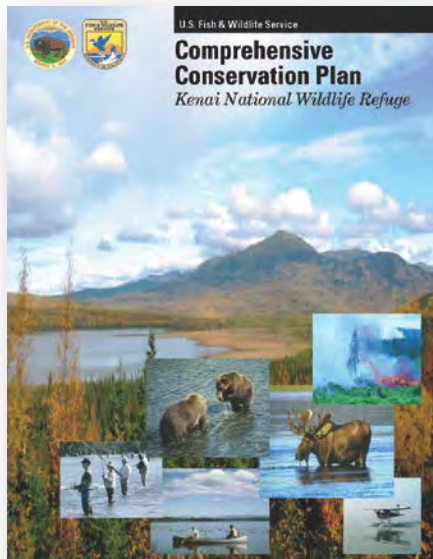
- *ensure biological integrity, diversity and environmental health*

Comprehensive Conservation Plan



1985

- ✓ Primary management plan for refuge
- ✓ 15-year planning cycle
- ✓ NEPA public scoping and targeted outreach



2010

Land Management Challenges

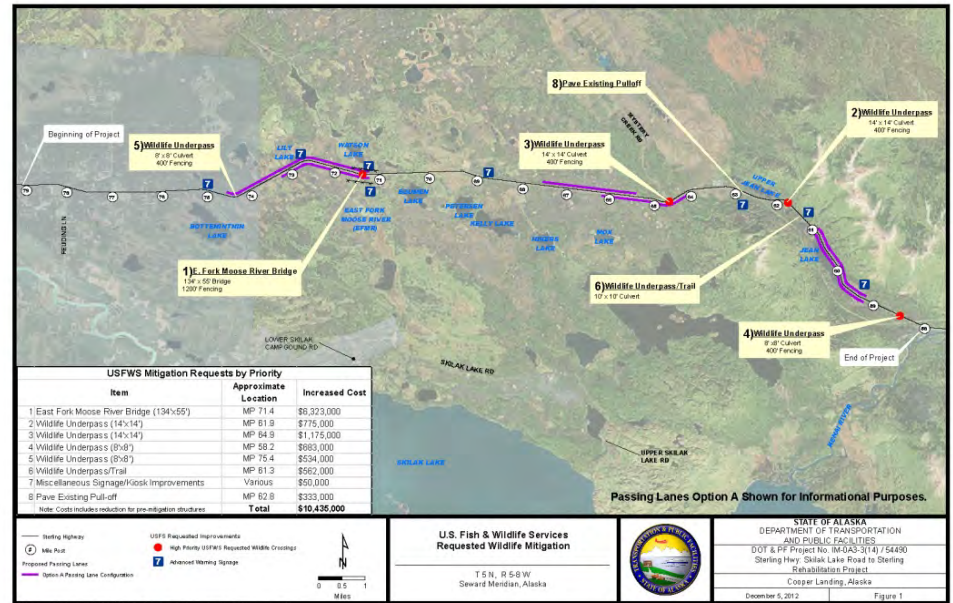
- ✓ 175-mile urban interface
- ✓ Road system/traffic volume
- ✓ Commercial oil and gas leases
- ✓ Invasive species
- ✓ Recreational impacts (snowmachines, floatplanes, combat fishing, human-wildlife conflicts, recreational/subsistence harvest)
- ✓ Deforestation, wetlands drying, changing fire regime
- ✓ DOT/HEA/ENSTAR right-of-ways
- ✓ Wilderness stewardship



Opportunities to better work across boundaries



Coordinated stream restoration

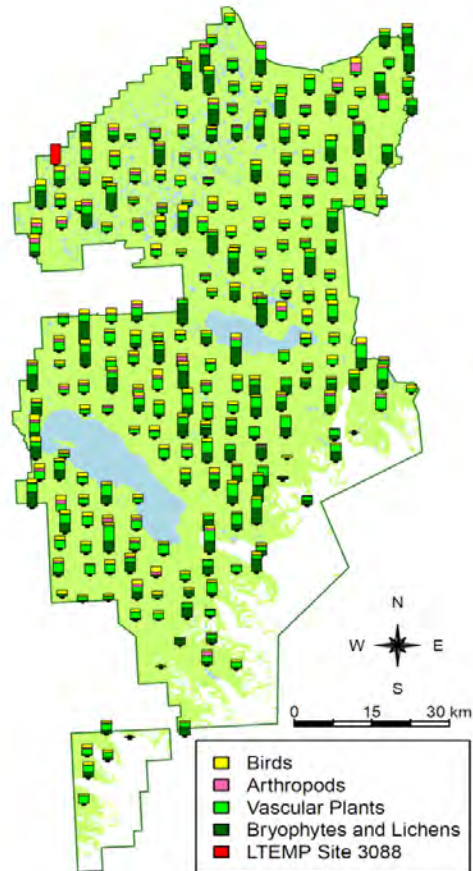


Coordinated highway mitigation for wildlife

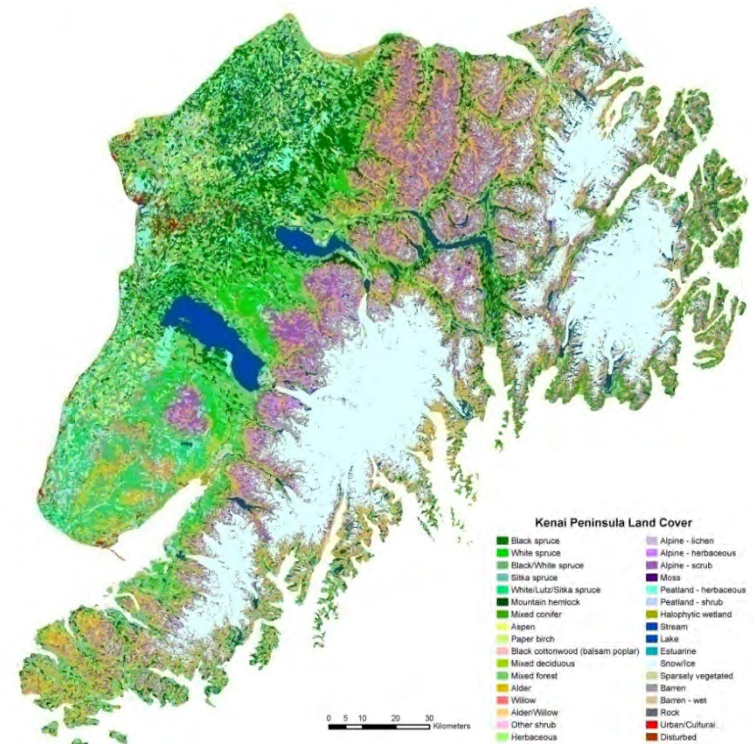


Coordinated weed management

Landscape Information Needs



Peninsula-wide biodiversity inventory



Updated landcover classification



Kenai National Wildlife Refuge



- ✓ john_m_morton@fws.gov, 907-260-2815
- ✓ <https://www.fws.gov/refuge/Kenai/>
- ✓ https://www.fws.gov/refuge/Kenai/what_we_do/resource_management/plans.html