

Eska Creek Fish Passage Restoration Projects

Presented by:

Brian Winnestaffer

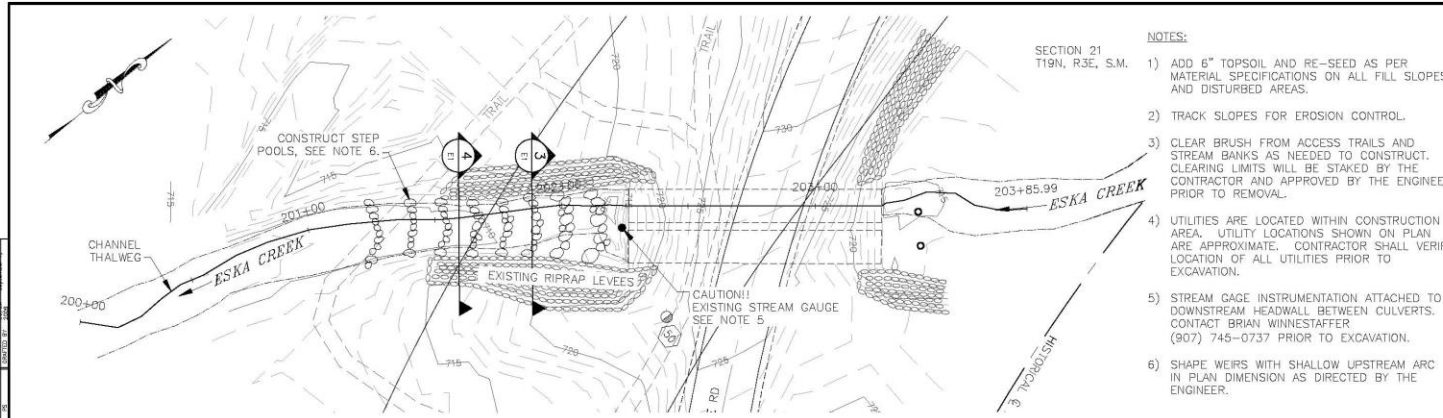
Chickaloon Village Traditional Council



Lower Eska Creek Fish Passage Barrier

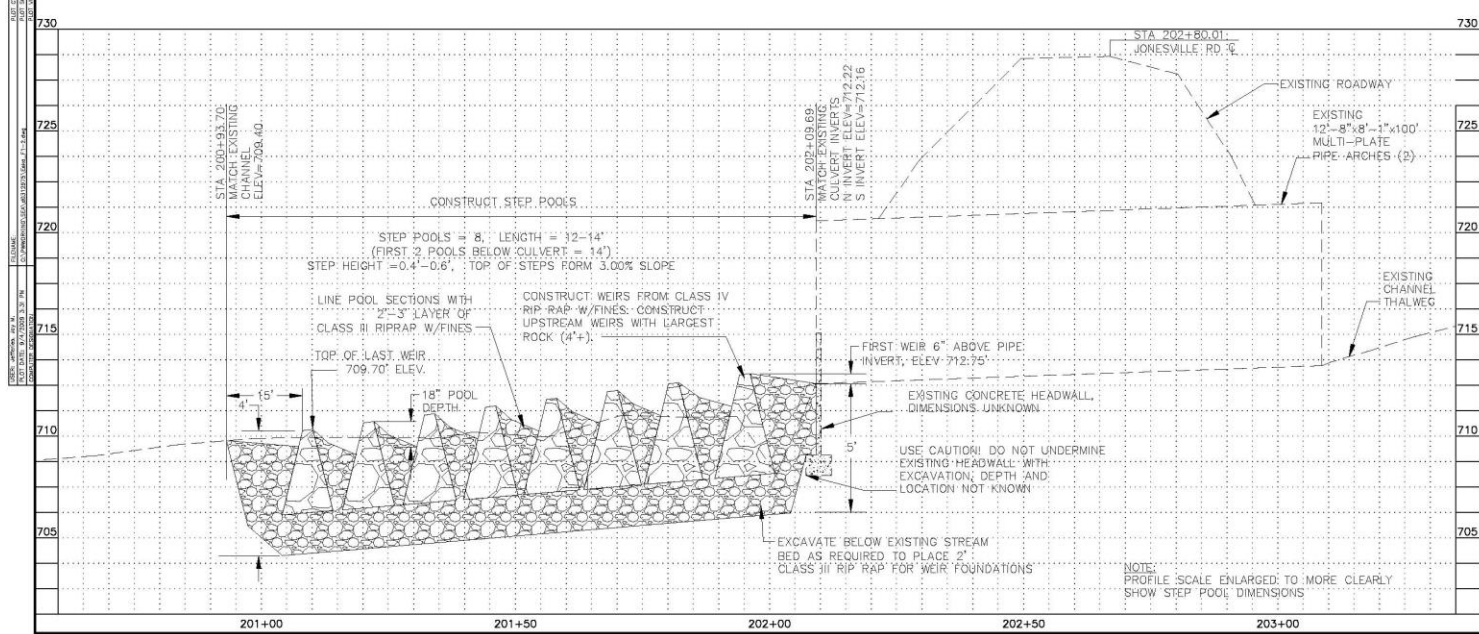


Professional Survey and Design



- NOTES:**
- 1) ADD 6" TOPSOIL AND RE-SEED AS PER MATERIAL SPECIFICATIONS ON ALL FILL SLOPES AND DISTURBED AREAS.
 - 2) TRACK SLOPES FOR EROSION CONTROL.
 - 3) CLEAR BRUSH FROM ACCESS TRAILS AND STREAM BANKS AS NEEDED TO CONSTRUCT. CLEARING LIMITS WILL BE STAKED BY THE CONTRACTOR AND APPROVED BY THE ENGINEER PRIOR TO REMOVAL.
 - 4) UTILITIES ARE LOCATED WITHIN CONSTRUCTION AREA. UTILITY LOCATIONS SHOWN ON PLAN ARE APPROXIMATE. CONTRACTOR SHALL VERIFY LOCATION OF ALL UTILITIES PRIOR TO EXCAVATION.
 - 5) STREAM GAGE INSTRUMENTATION ATTACHED TO DOWNSTREAM HEADWALL BETWEEN CULVERTS. CONTACT BRIAN WINNESTAFFER (907) 745-0737 PRIOR TO EXCAVATION.
 - 6) SHAPE WEIRS WITH SHALLOW UPSTREAM ARC IN PLAN DIMENSION AS DIRECTED BY THE ENGINEER.

SHEET NO.	TOTAL SHEETS	
F2	8	
STATE	YEAR	
ALASKA	2009	
ADDENDUM NO.		
PROJECT DESIGNATION		
REVISONS		
NO.	DATE	DESCRIPTION



STA 202+80.01
JONESVILLE, RD. C

EXISTING ROADWAY

EXISTING 12'-8"x8'-1"x100' MULTI-PLATE PIPE ARCHES (2)

EXISTING CHANNEL THALWEG

EXISTING CONCRETE HEADWALL, DIMENSIONS UNKNOWN

USE CAUTION! DO NOT UNDERMINE EXISTING HEADWALL WITH EXCAVATION, DEPTH AND LOCATION NOT KNOWN

EXCAVATE BELOW EXISTING STREAM BED AS REQUIRED TO PLACE 2' CLASS III RIP-RAP FOR WEIR FOUNDATIONS

NOTE: PROFILE SCALE ENLARGED TO MORE CLEARLY SHOW STEP POOL DIMENSIONS

HDR ALASKA, Inc.
6100 FALCONRY VILLAGE
ENVIRONMENTAL STEWARDSHIP DEPARTMENT

ESKA CREEK FISHERIES ENHANCEMENT PROJECT

LOWER CROSSING PLAN & PROFILE

If You Build It



Put Your Apron On





Step By Step-Pool



The Non-Built Look









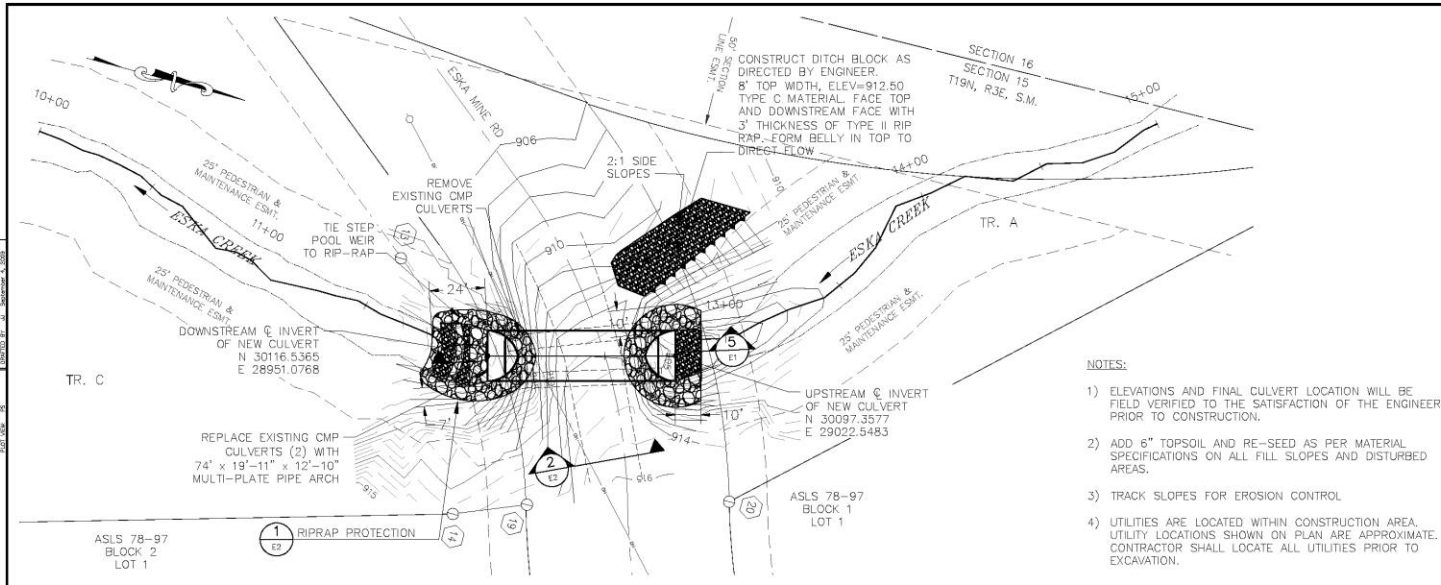
Re-veg It!



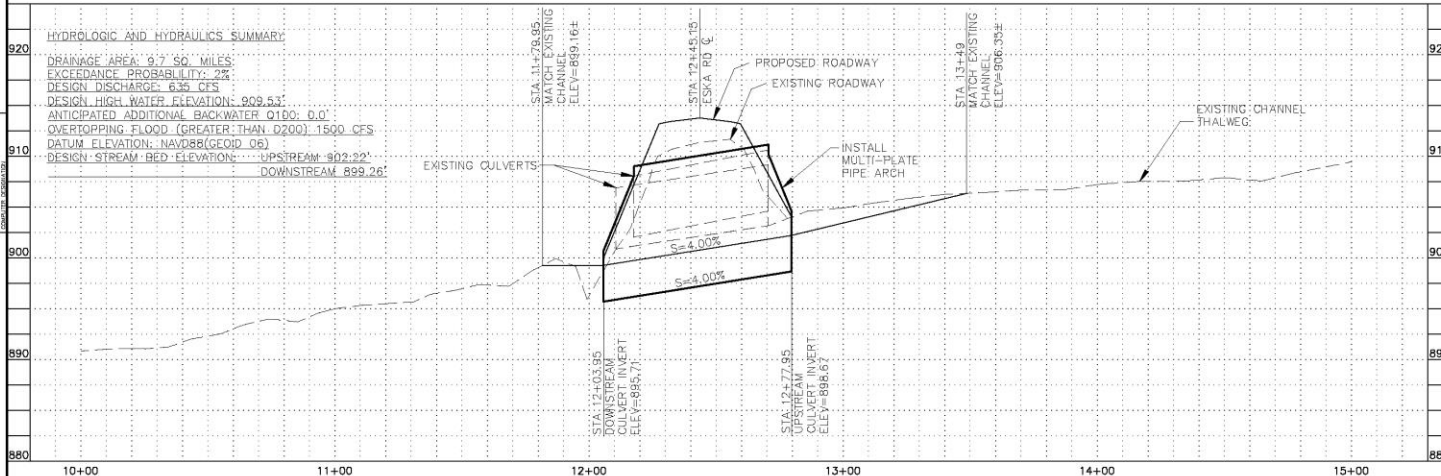
Upper Eska Creek Fish Passage Barrier



Professional Survey and Design



- NOTES:**
- 1) ELEVATIONS AND FINAL CULVERT LOCATION WILL BE FIELD VERIFIED TO THE SATISFACTION OF THE ENGINEER PRIOR TO CONSTRUCTION.
 - 2) ADD 6" TOPSOIL AND RE-SEED AS PER MATERIAL SPECIFICATIONS ON ALL FILL SLOPES AND DISTURBED AREAS.
 - 3) TRACK SLOPES FOR EROSION CONTROL.
 - 4) UTILITIES ARE LOCATED WITHIN CONSTRUCTION AREA. UTILITY LOCATIONS SHOWN ON PLAN ARE APPROXIMATE. CONTRACTOR SHALL LOCATE ALL UTILITIES PRIOR TO EXCAVATION.



SHEET NO.	TOTAL SHEETS	
F1	8	
STATE	YEAR	
ALASKA	2009	
ADDENDUM NO.		

PROJECT DESIGNATION		

REVISIONS		
NO.	DATE	DESCRIPTION

HDR ALASKA, Inc.
SICHELDOON VILLAGE
ENVIRONMENTAL STEWARDSHIP
DEPARTMENT

**ESKA CREEK FISHERIES
ENHANCEMENT PROJECT**

**UPPER CROSSING
PLAN & PROFILE**

**Thank-You NFHAP
and
The Mat-Su Salmon
Habitat Partnership
for
Funding This Project!**

