

Upper Wasilla Creek Culvert Restoration Project



Coordinated by:

Brian Winnestaffer and Bill Rice



**Chickaloon Village Traditional Council,
USFWS and Mat-Su Basin Salmon Habitat
Partnership**



October 2008 Mat-Su Basin Salmon Science and Restoration
Symposium

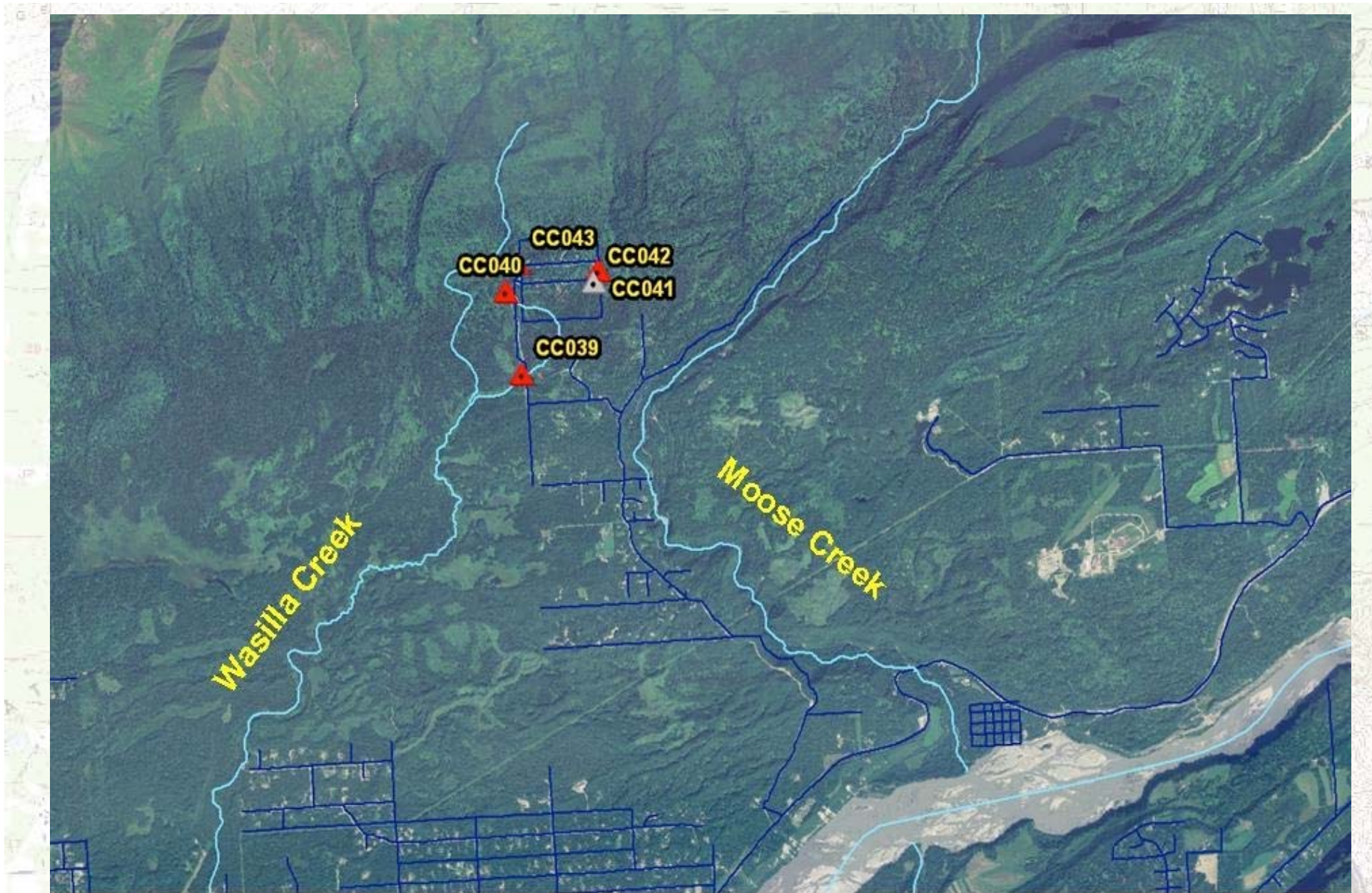


Why we do what we do.



Issues?





Location Map

Culverts to be Replaced

Culvert 1

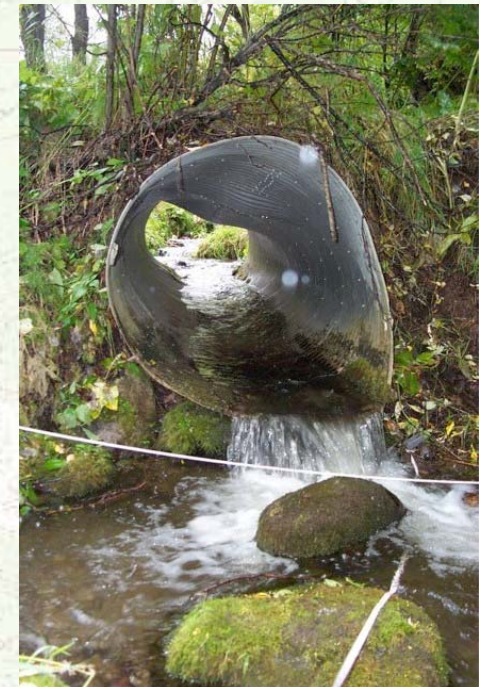
Culvert 2

Culvert 3

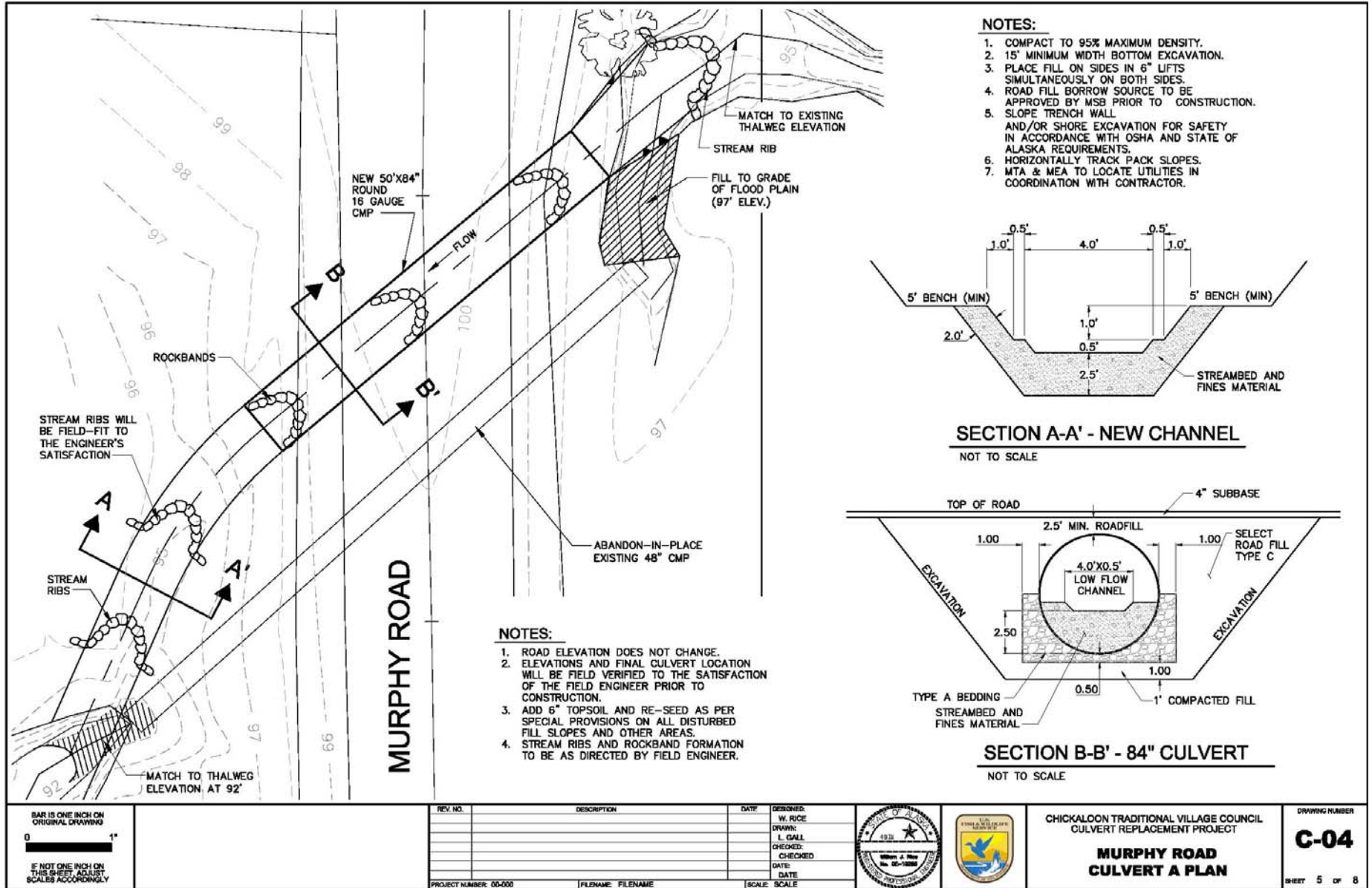
Inlet



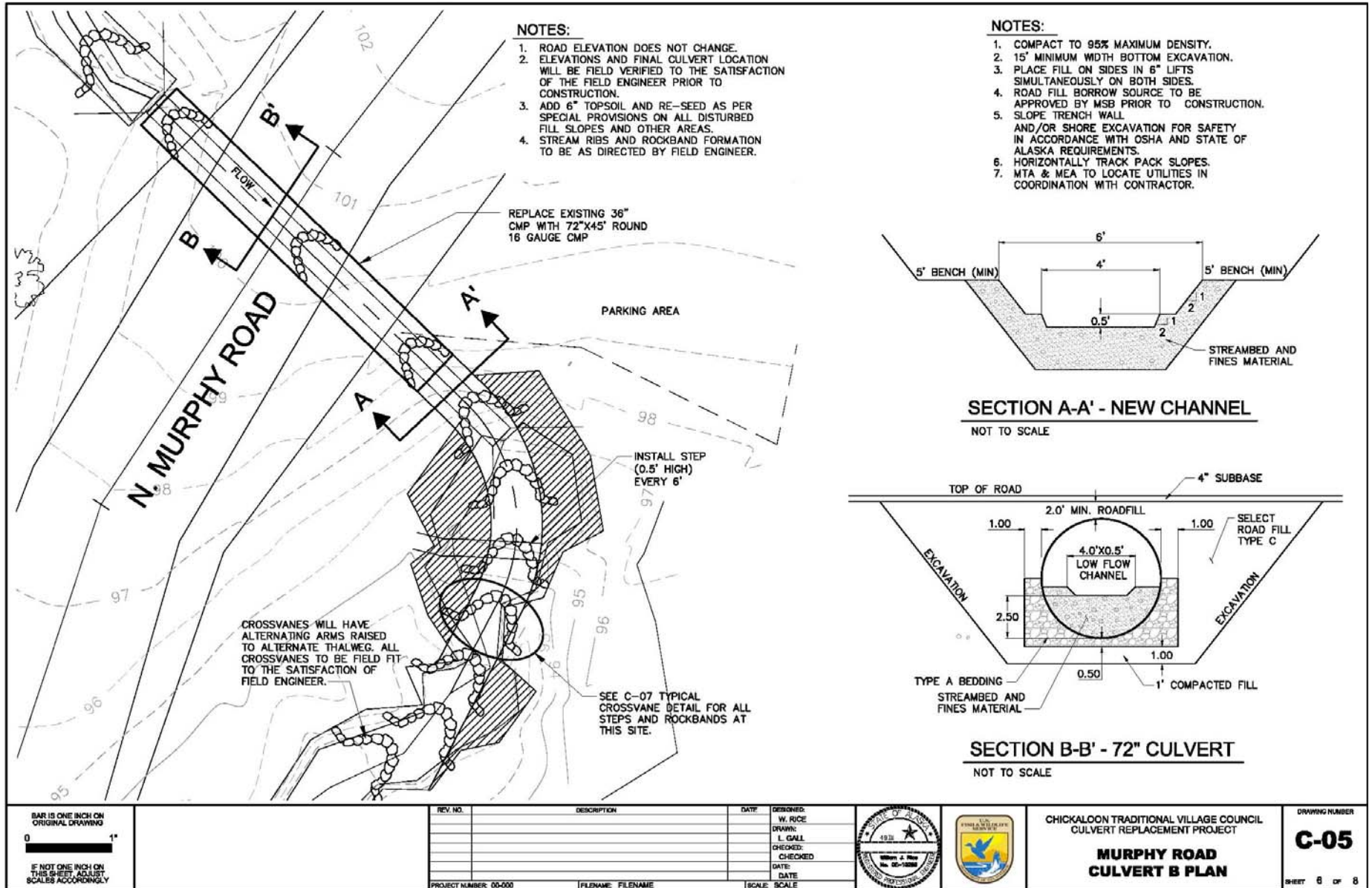
Outlet



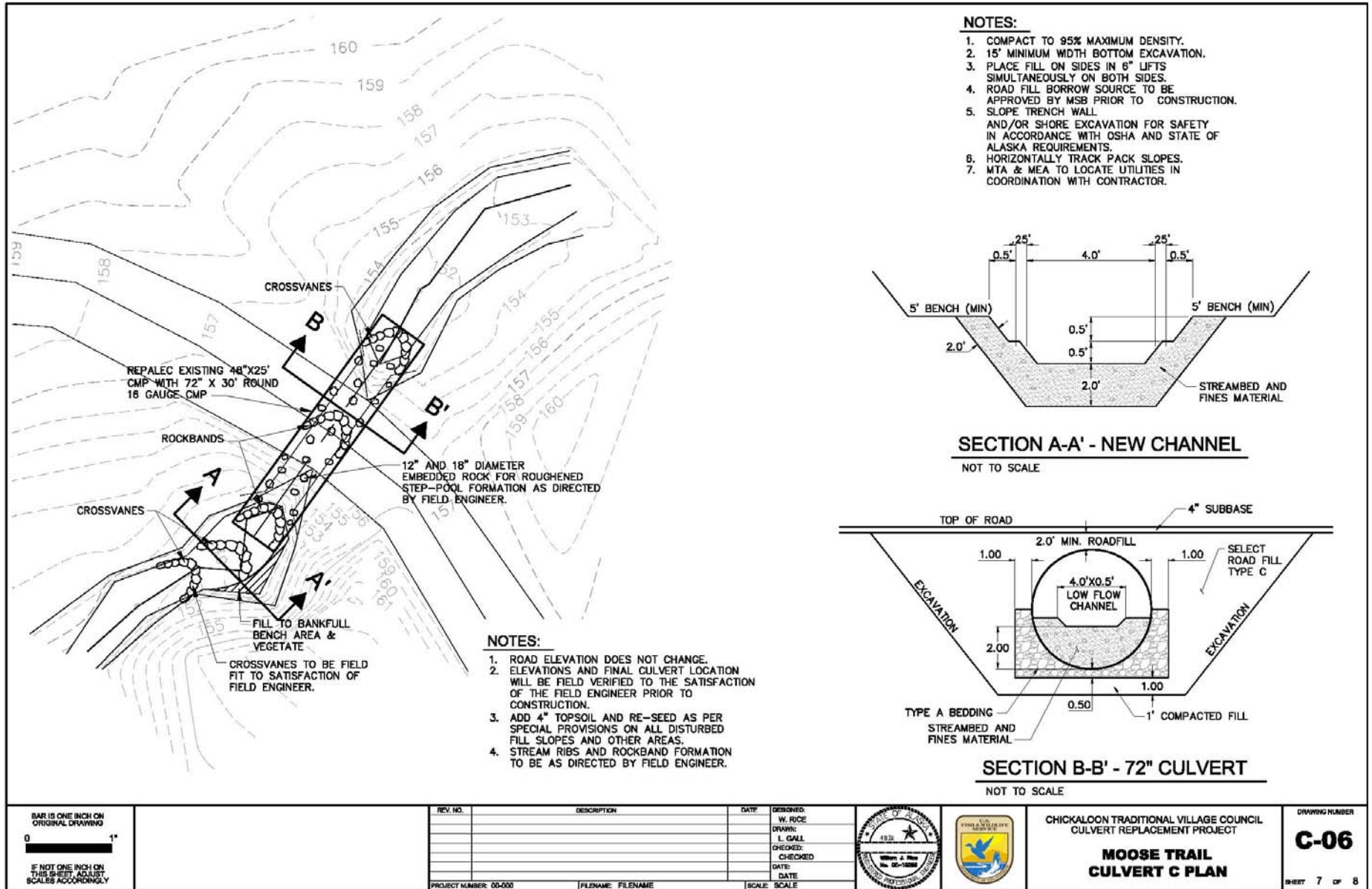
Culvert 1 Design



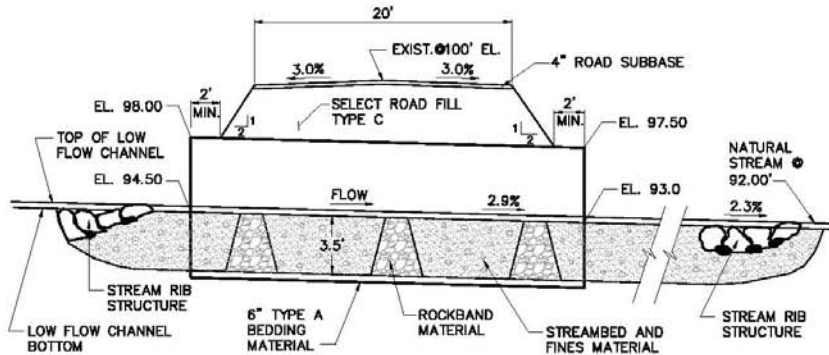
Culvert 2 Design



Culvert 3 Design

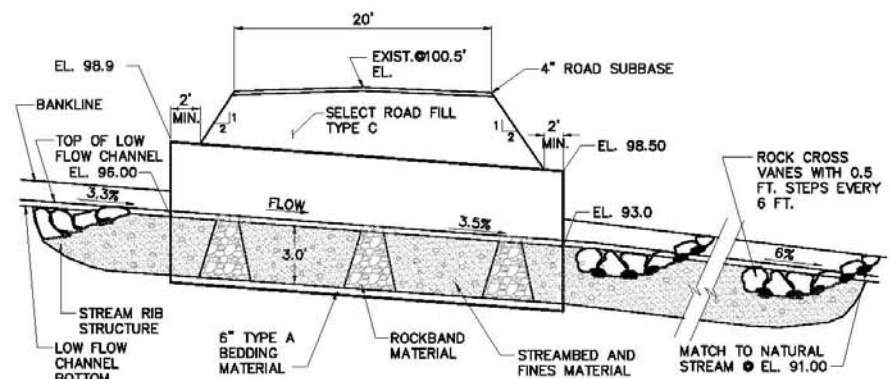


Culvert Profiles



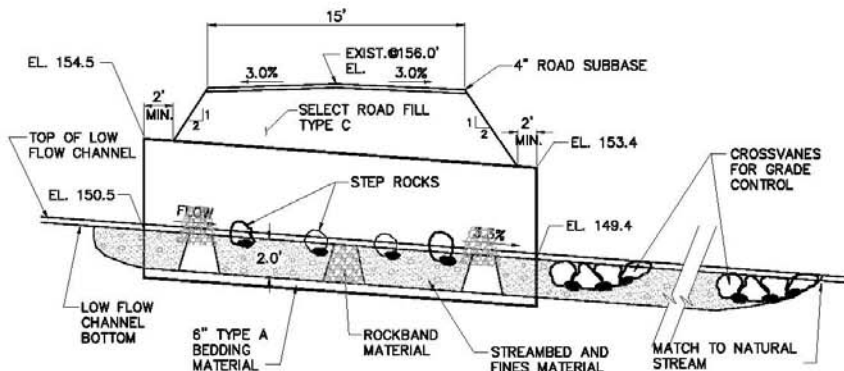
CULVERT A - 84" CULVERT AND STREAM PROFILE

NOT TO SCALE



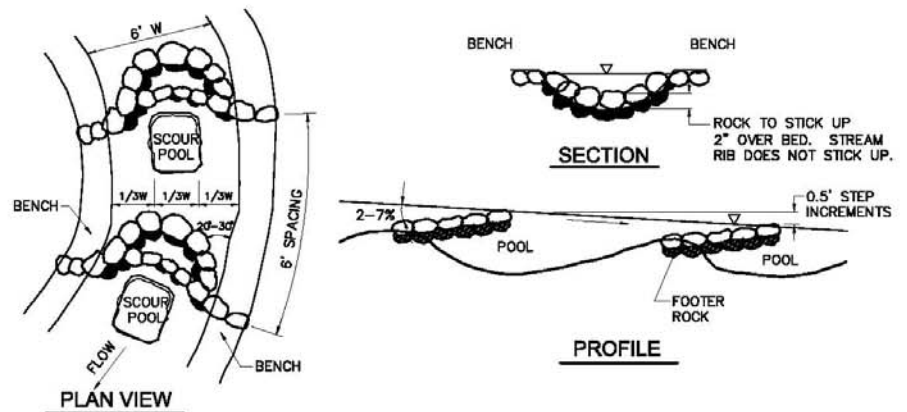
CULVERT B - 72" CULVERT AND STREAM PROFILE

NOT TO SCALE



CULVERT C - 72" CULVERT AND STREAM PROFILE

NOT TO SCALE



TYPICAL CROSS VANE DETAIL

NOT TO SCALE

GENERAL NOTES:

1. RECONSTRUCT ROAD ELEVATION TO REMAIN AT EXISTING GRADES.

BAR IS ONE INCH ON ORIGINAL DRAWING
 0 1"
 IF NOT ONE INCH ON THIS SHEET, ADJUST SCALES ACCORDINGLY

REV. NO.	DESCRIPTION	DATE	DESIGNED:
			W. RICE
			DRAWN:
			L. GALL
			CHECKED:
			CHECKED:
			DATE:
			DATE:

PROJECT NUMBER: 00-000 FILENAME: FILENAME SCALE: SCALE



CHICKALOON TRADITIONAL VILLAGE COUNCIL
 CULVERT REPLACEMENT PROJECT

CULVERT DETAILS

DRAWING NUMBER

C-07

SHEET 8 OF 8

Culvert 1 "Action"



Culvert 1 "Action" Con't



Culvert 1 "Action" Con't



Culvert 2 "New Action"



Culvert 2 "New Action" Con't



What didn't work.



Incorrect Pool idea.



Incorrect Woody Debris Placement.



Culvert 3 "Before and After"



Culverts to be Replaced

Culvert 1

Culvert 2

Culvert 3

Inlet



Outlet



Fall 2008

Culvert 1

Culvert 2

Culvert 3

Inlet



Outlet



Contacts:



- **Brian Winnestaffer: Fish and Wildlife Biologist**

brianw@chickaloon.org

- **Bill Rice: USFWS Habitat Restoration**

William_Rice@fws.gov

(907) 745-0737

www.chickaloon.org

