

Alaska

Background and Purpose

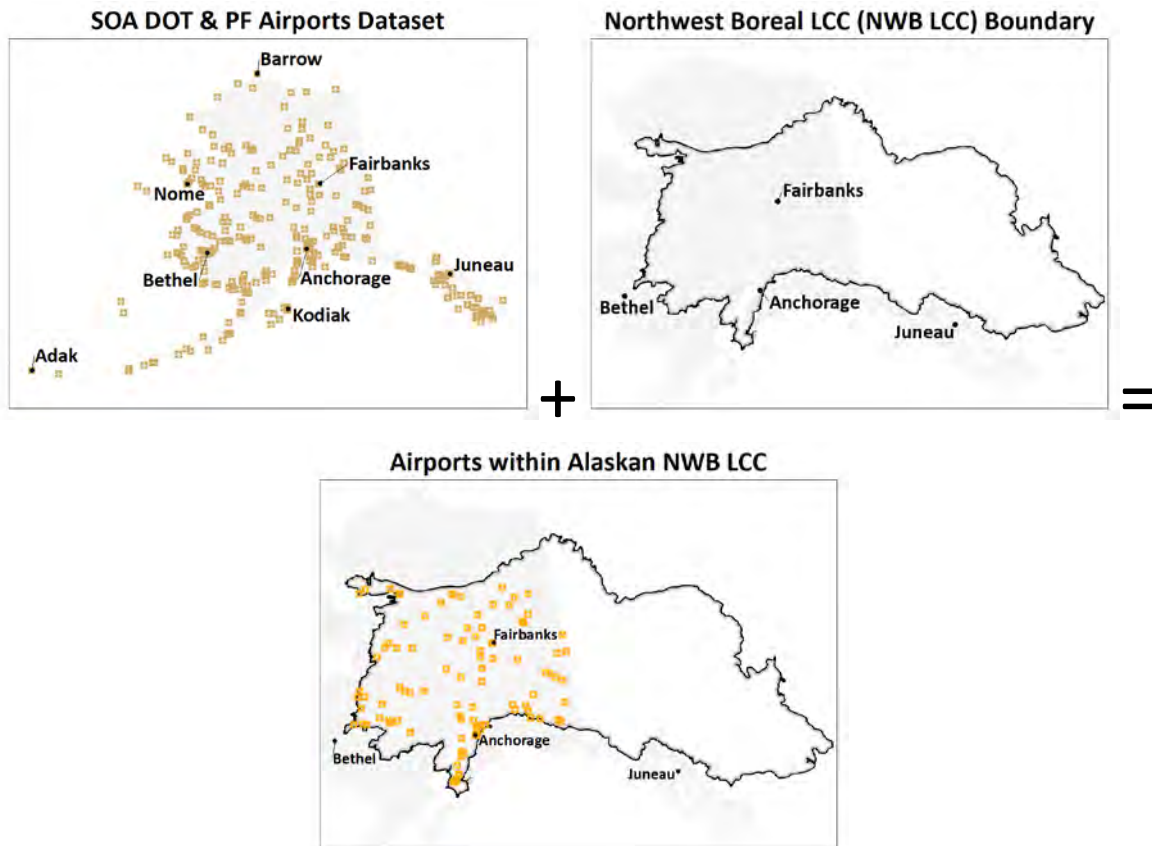
In Alaska and northwestern Canada, terrestrial travel occurs via various modes of transportation such as cars and trucks, the railroad, or even via snowmobile or dogsled during the winter months. The region's vast geography has only a few large transportation hubs. This project has patched together datasets in order to create a comprehensive and relatively complete picture of ground transportation in the area. These datasets attempt to capture the true extent of transportation paths across both the urban and rural landscape.

Methods

Due to their dynamic nature, datasets were kept separate by jurisdiction (i.e. Canada vs. Alaska) in order to ease future updates.

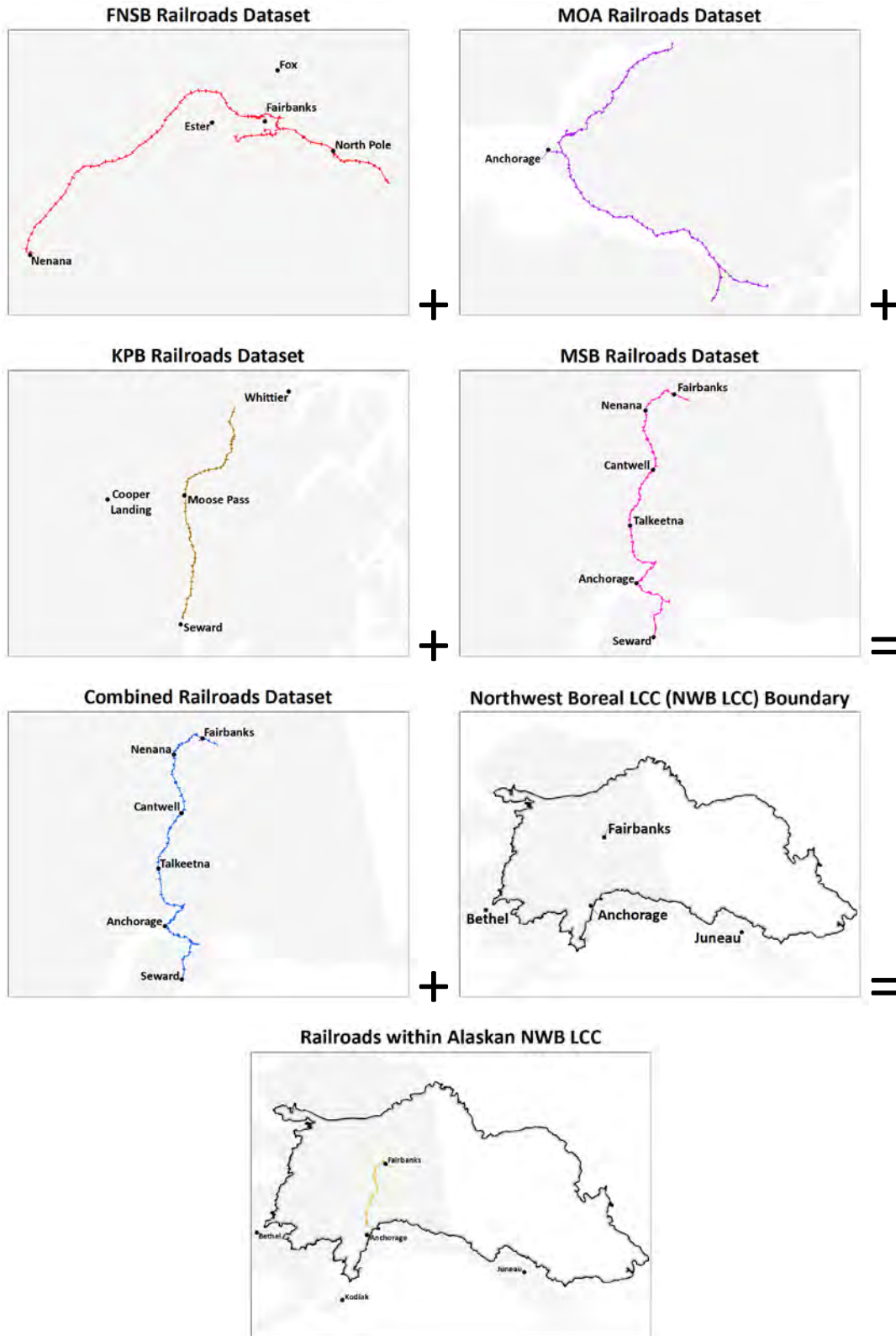
Capturing Airports

The airports dataset was created by trimming (clipping) the State of Alaska Department of Transportation and Public Facilities (SOA DOT & PF) public airports in Alaska dataset to the Northwest Boreal LCC boundary.



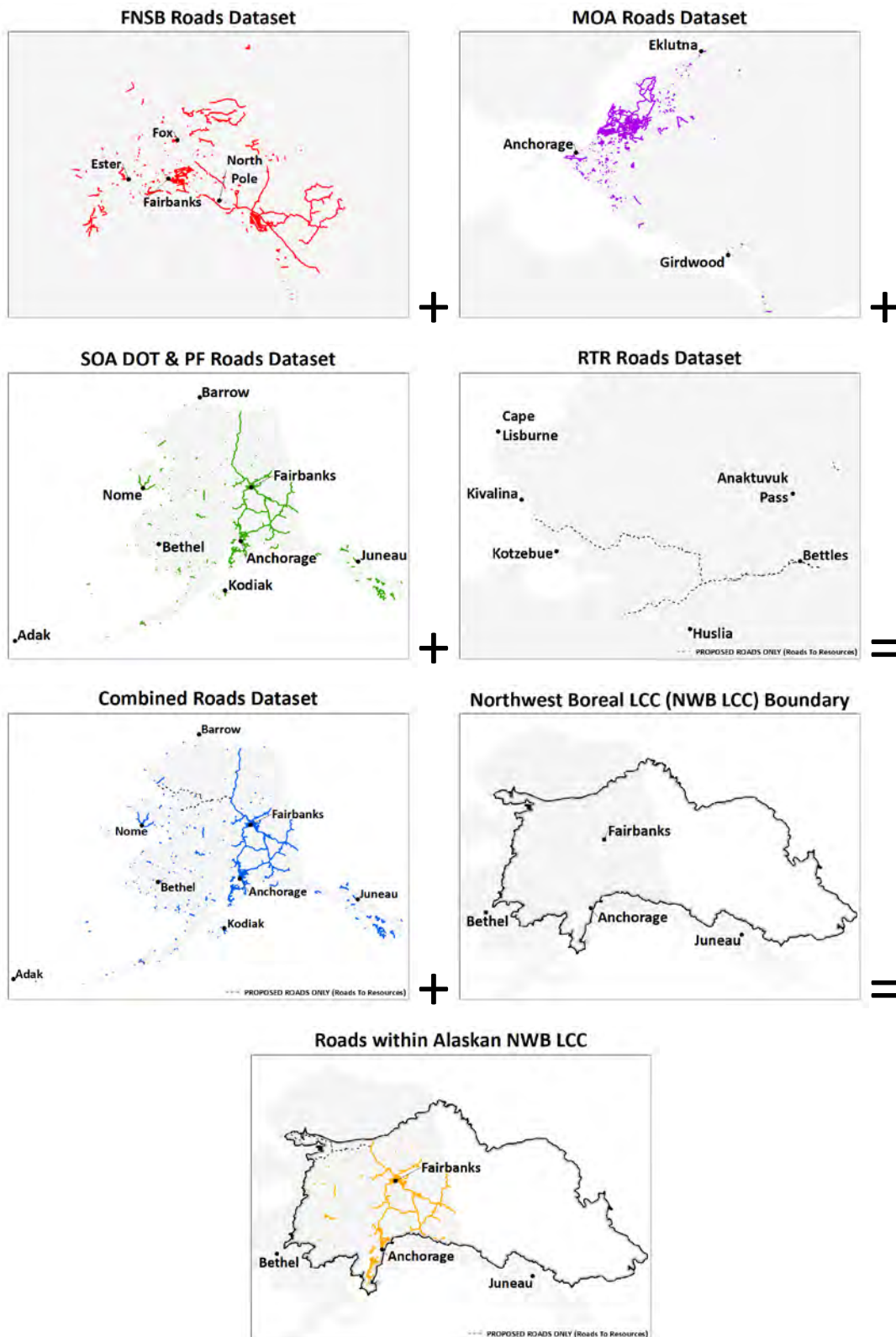
Capturing Railroads

The railroads dataset was created by meshing together datasets from the Fairbanks North Star Borough (FNSB), the Municipality of Anchorage (MOA), the Kenai Peninsula Borough (KPB), and the Matanuska-Susitna Borough (MSB). The railroads dataset was then trimmed (clipped) to the Northwest Boreal LCC boundary.



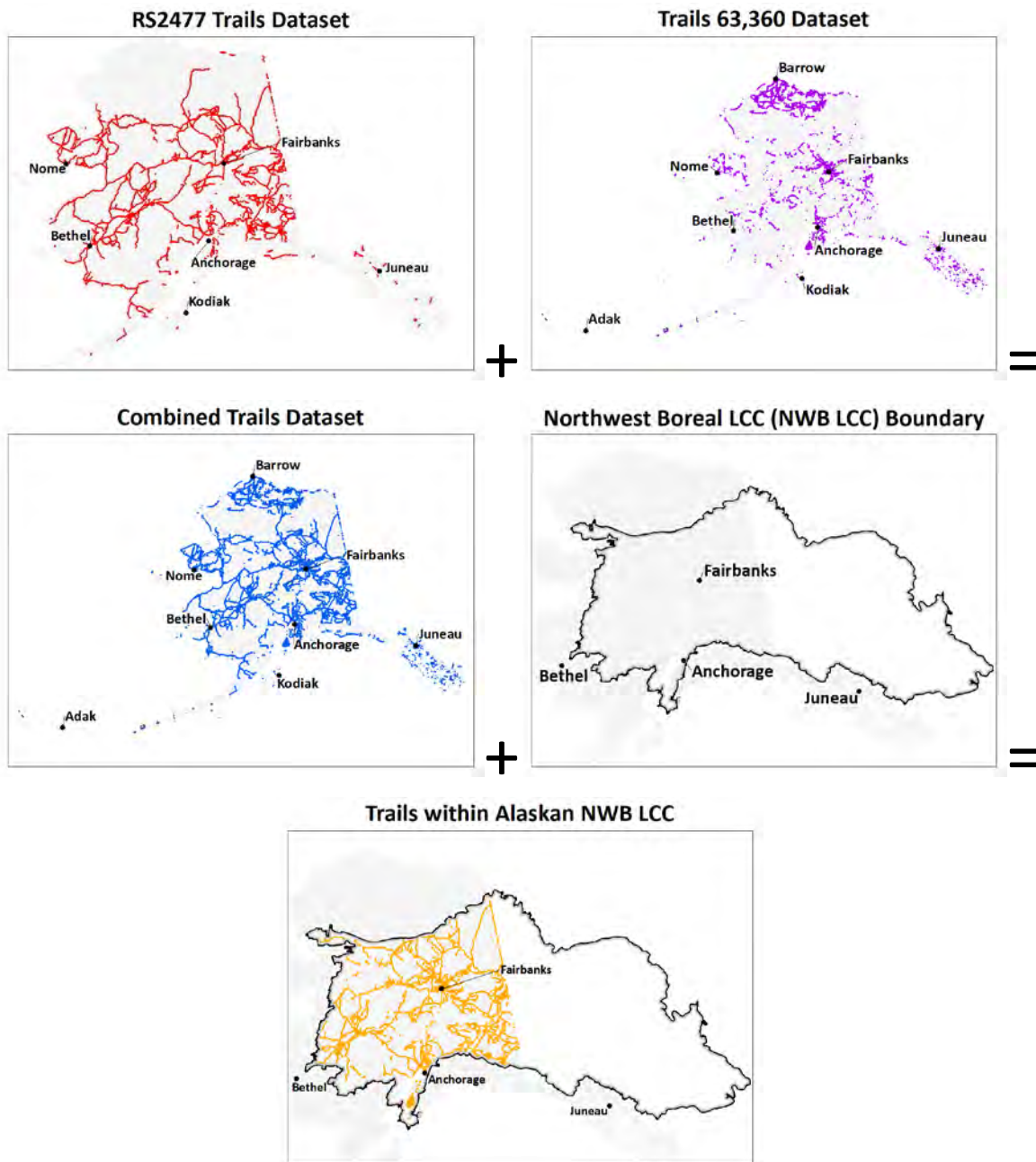
Capturing Roads

The roads dataset was created by meshing together datasets from the Fairbanks North Star Borough (FNSB), the Municipality of Anchorage (MOA), the State of Alaska Department of Transportation and Public Facilities (SOA DOT & PF), and Roads to Resources (RTR). The roads dataset was then trimmed (clipped) to the Northwest Boreal LCC boundary.

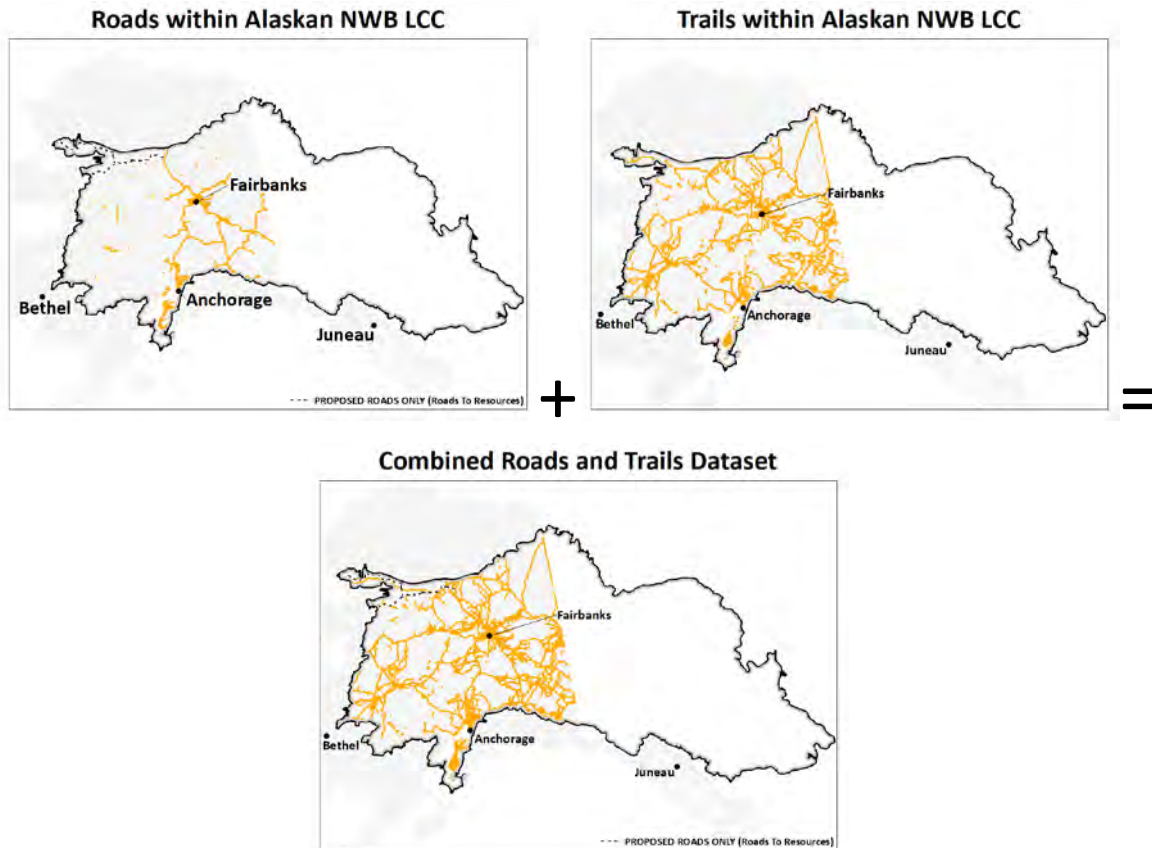


Capturing Trails

Capturing a statewide picture of the trail system (some of which only occur seasonally in the case of winter trails) was done by combining the Trails 63,360 dataset and the State of Alaska RS2477 trails dataset (Revised Statute 2477 - <http://dnr.alaska.gov/mlw/trails/rs2477/>). The trails dataset was then trimmed (clipped) to the Northwest Boreal LCC boundary.



Trails & Roads Combined



Source Datasets

- Alaska Department of Transportation and Public Facilities (SOA DOT & PF) – Public Airports in Alaska. Available: <http://www.dot.state.ak.us/stwdplng/mapping/shapefiles.shtml>
- Alaska Department of Transportation and Public Facilities (SOA DOT & PF) – Routes. Available: <http://www.dot.state.ak.us/stwdplng/mapping/shapefiles.shtml>
- Alaska Department of Natural Resources – RS2477 Trails. Available: <http://www.asgdc.state.ak.us/>
- Alaska Department of Natural Resources – Trails 63,360. Available: <http://www.asgdc.state.ak.us/>
- Fairbanks North Star Borough (FNSB) – FNSBGIS.gdb. Available: <http://gis.co.fairbanks.ak.us/>
- Fairbanks North Star Borough (FNSB) – Road Lines. Available: <http://gis.co.fairbanks.ak.us/>
- Kenai Peninsula Borough Alaska (KPB) – Railroads. Available: <http://www.kpb.us/gis-dept/kpb-data-downloads/transportation>
- Matanuska-Susitna Borough (MSB) – Infrastructure Railroad. Available: <http://data1-msb.opendata.arcgis.com/>
- Municipality of Anchorage (MOA) – Railroad. Available: <http://www.muni.org/Departments/OCPD/GIS2/Pages/GISDataDownloads.aspx>
- Municipality of Anchorage (MOA) – Street Segments. Available: <http://www.muni.org/Departments/OCPD/GIS2/Pages/GISDataDownloads.aspx>
- Roads to Resources – ADOT&PF, Central Yukon REA. Available: http://accs.uaa.alaska.edu/files/rapid-ecoregional-assessments/cyr/CentralYukonREA_SectionE_AnthropogenicChangeAgents.pdf

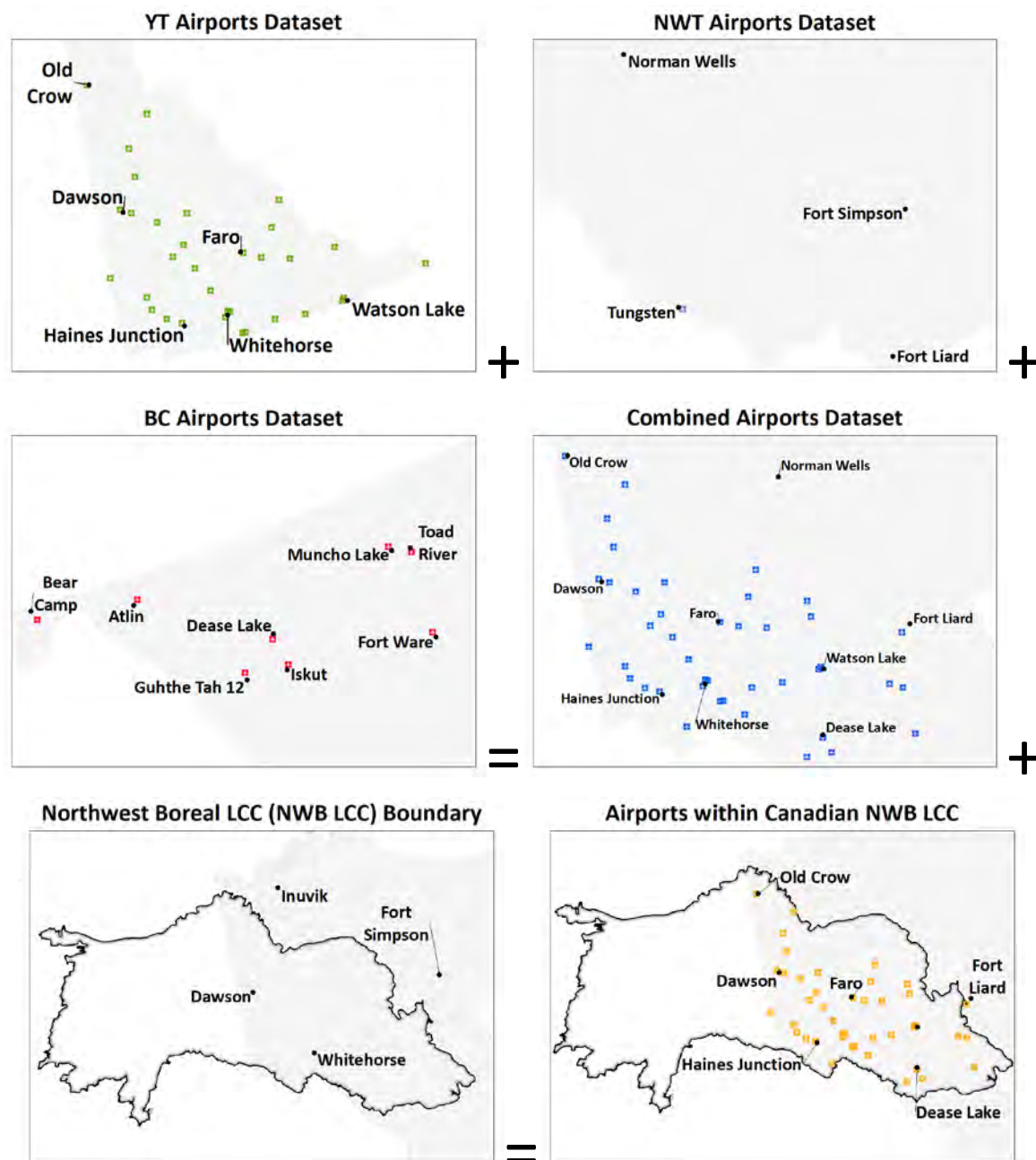
Yukon Territory, Northwest Territories, and British Columbia

Methods

Due to their dynamic nature, datasets were kept separate by jurisdiction (i.e. Canada vs. Alaska) in order to ease future updates.

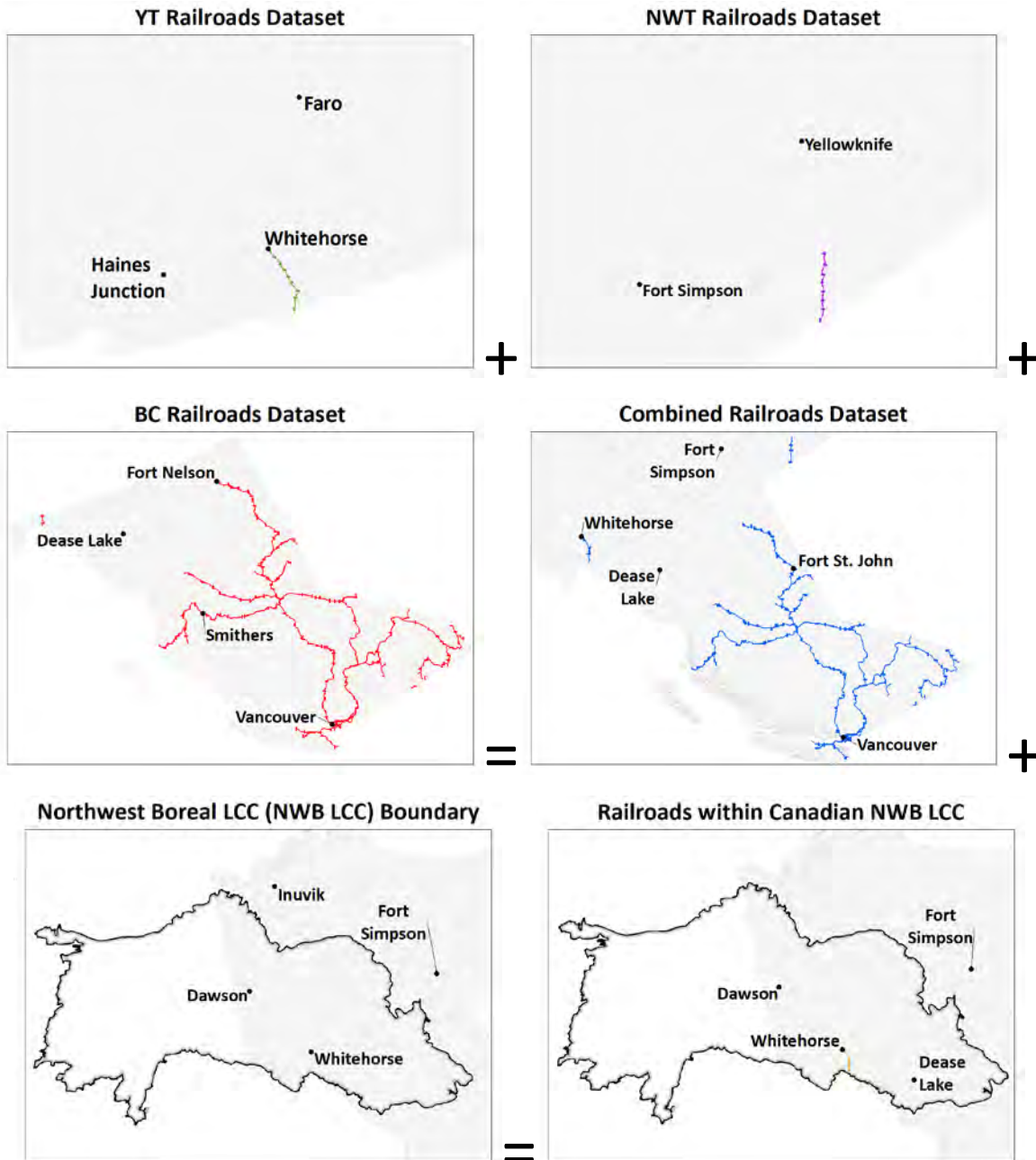
Capturing Airports

The airports dataset was created by meshing together datasets from the Yukon Territory (YT), the Northwest Territories (NWT), and British Columbia (BC). The airports dataset was then trimmed (clipped) to the Northwest Boreal LCC boundary.



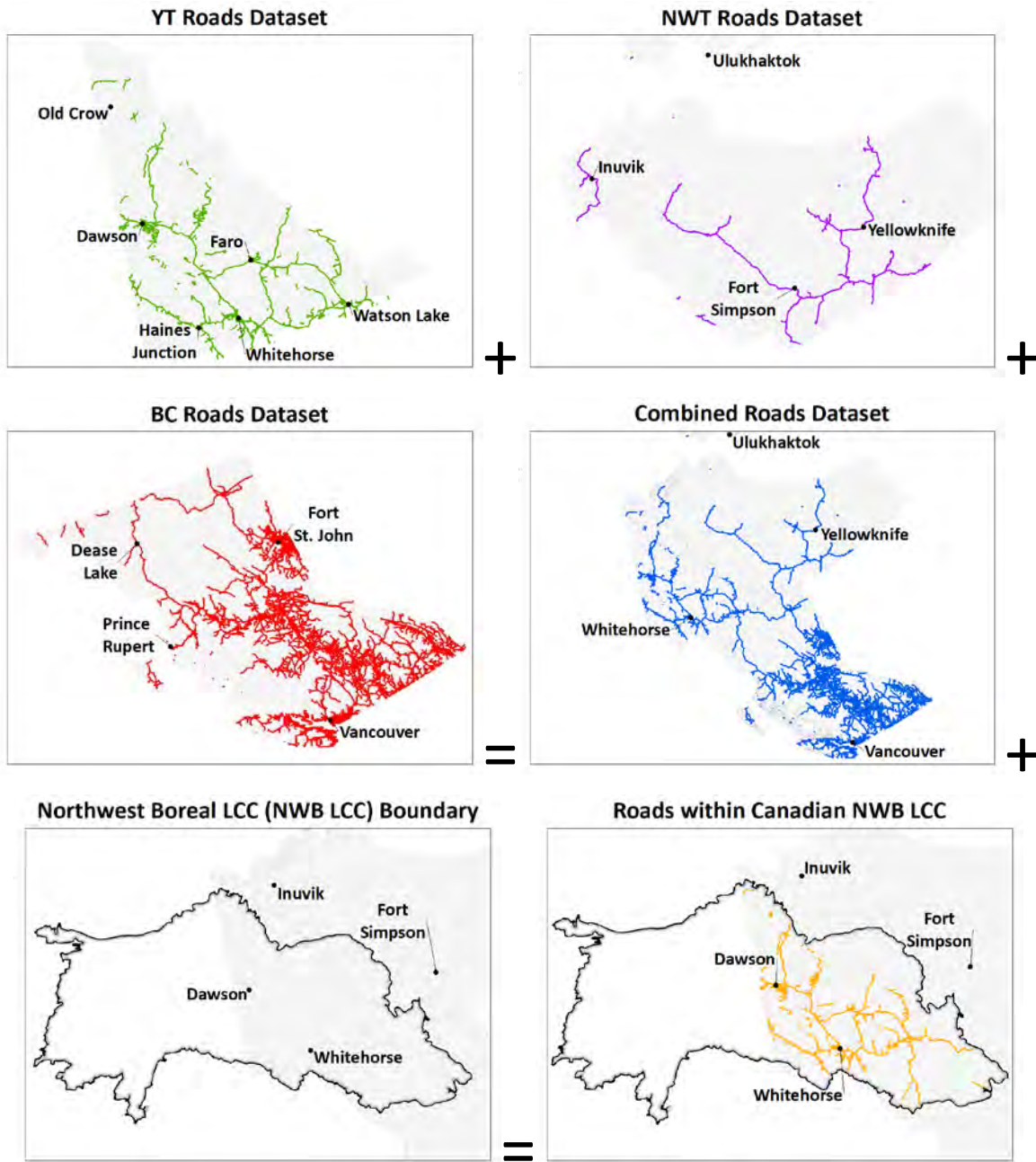
Capturing Railroads

The railroads dataset was created by meshing together datasets from the Yukon Territory (YT), the Northwest Territories (NWT), and British Columbia (BC). The railroads dataset was then trimmed (clipped) to the Northwest Boreal LCC boundary.



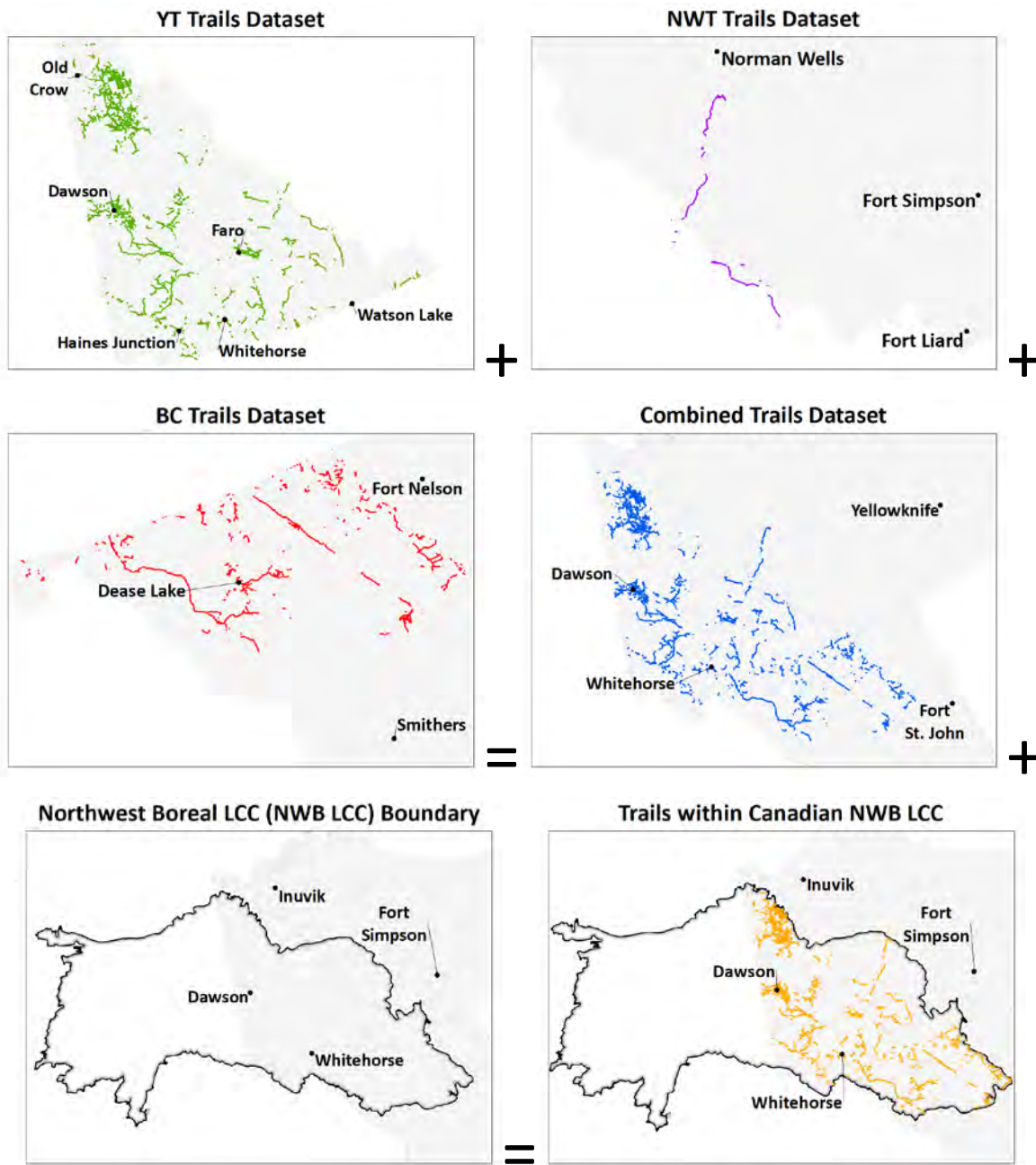
Capturing Roads

The roads dataset was created by meshing together datasets from the Yukon Territory (YT), the Northwest Territories (NWT), and British Columbia (BC). The roads dataset was then trimmed (clipped) to the Northwest Boreal LCC boundary.

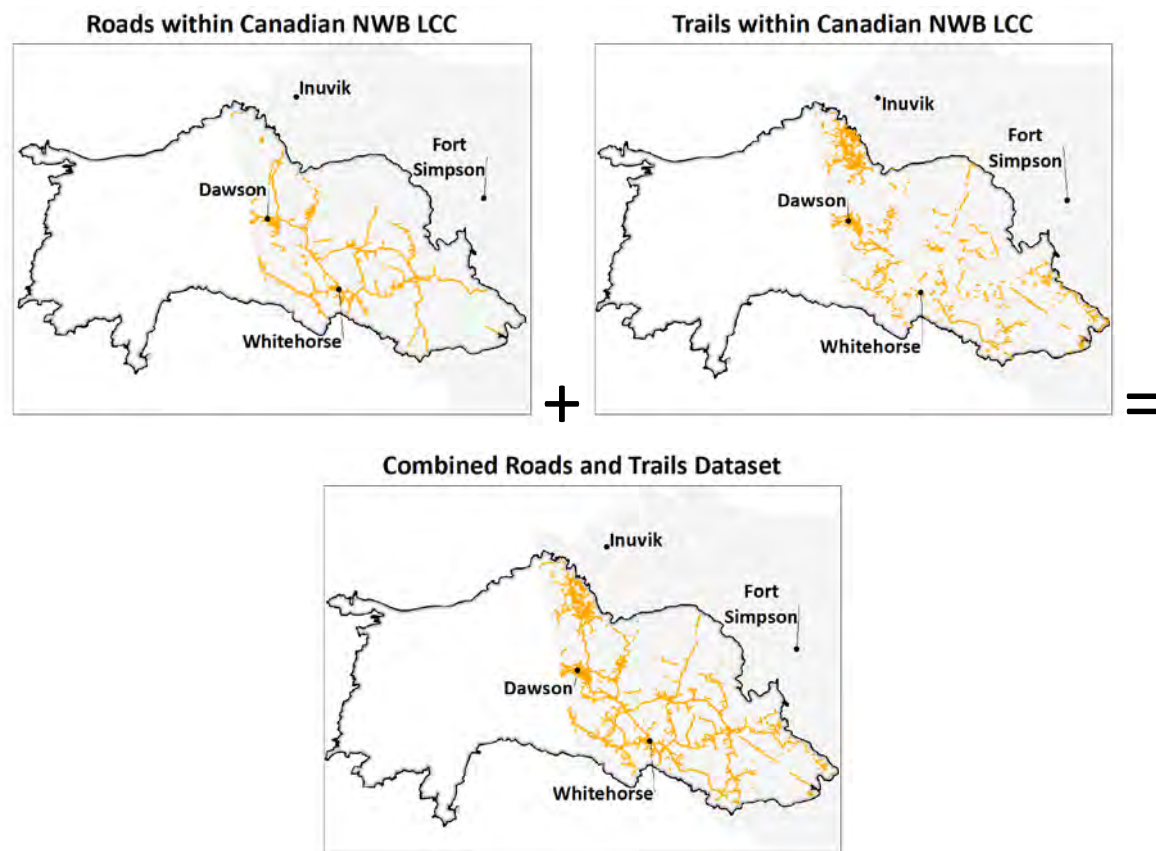


Capturing Trails

The trails dataset was created by meshing together datasets from the Yukon Territory (YT), the Northwest Territories (NWT), and British Columbia (BC). The trails dataset was then trimmed (clipped) to the Northwest Boreal LCC boundary.



Trails & Roads Combined

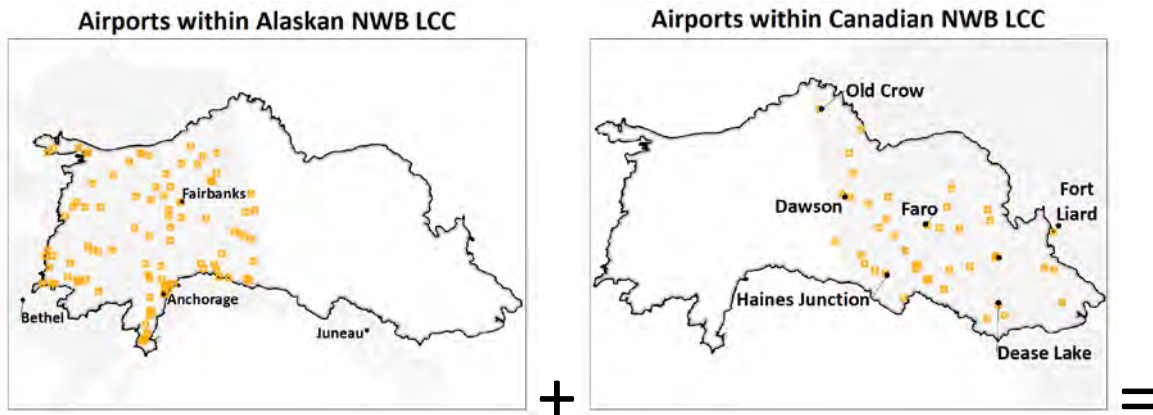


Source Datasets

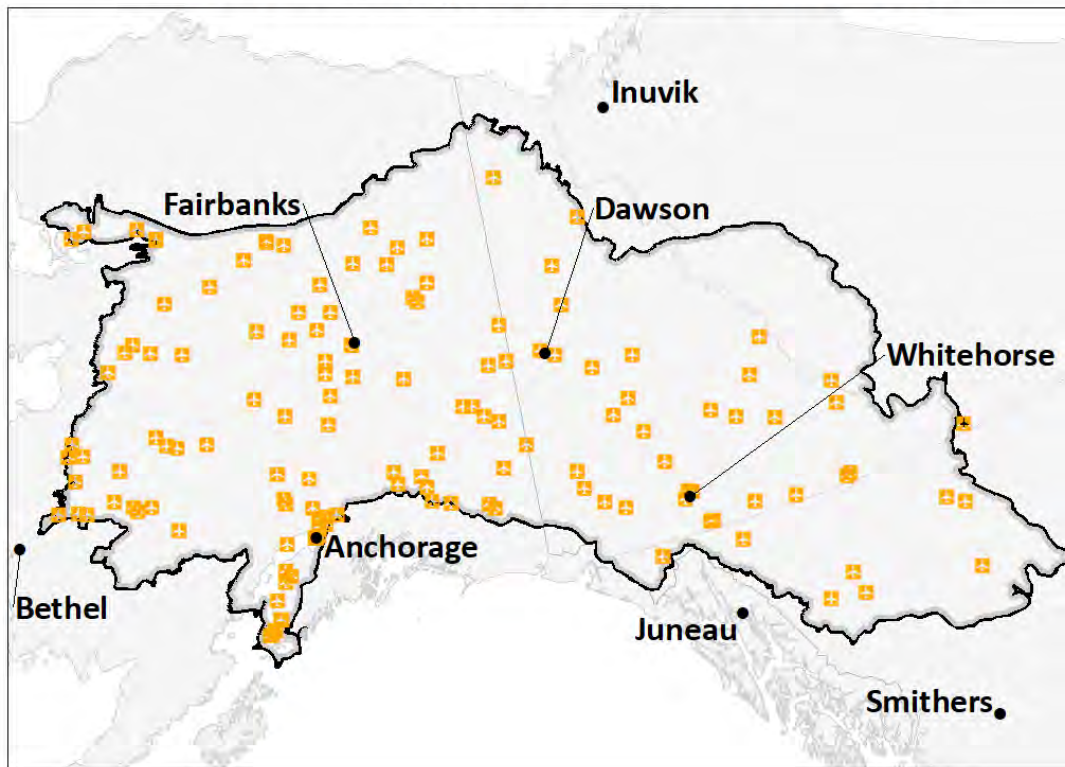
- GeoYukon – Trails - 50k. Available: <http://geoweb.gov.yk.ca/geoportal/catalog/search/resource/details.page?uuid=%7B0F00A0B9-6619-4716-8B35-A3E22C0695AE%7D>
- Natural Resources Canada, Earth Sciences Sector, Canada Centre for Mapping and Earth Observation – CanVec - Places of interest - Trail. Available: <http://geogratis.gc.ca/site/eng/download>
- Natural Resources Canada – National Railway Network - NRWN - GeoBase Series. Available: http://ftp.maps.canada.ca/pub/nrcan_rncan/vector/geobase_nrwn_rfn/
- Natural Resources Canada – National Road Network - NRN - GeoBase. Available: http://ftp.maps.canada.ca/pub/nrcan_rncan/vector/geobase_nrn_rrn/

Final Northwest Boreal LCC Datasets

Airports



Combined Airports Across NWB LCC

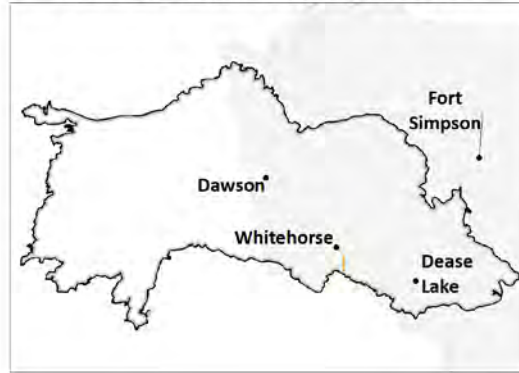


Railroads

Railroads within Alaskan NWB LCC



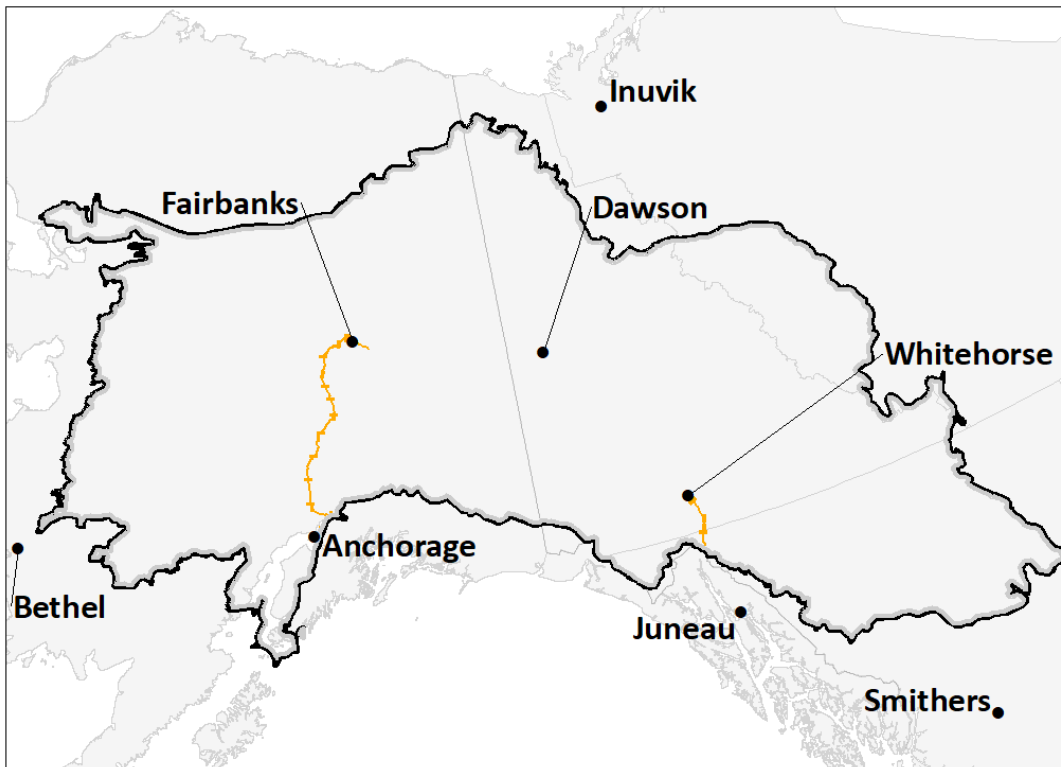
Railroads within Canadian NWB LCC



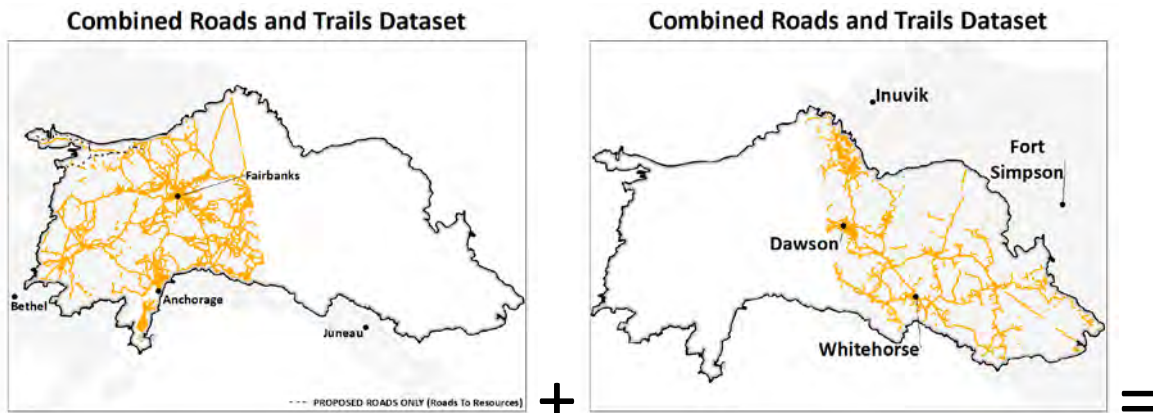
+

=

Combined Railroads Across NWB LCC



Roads & Trails



Combined Roads & Trails Across NWB LCC

