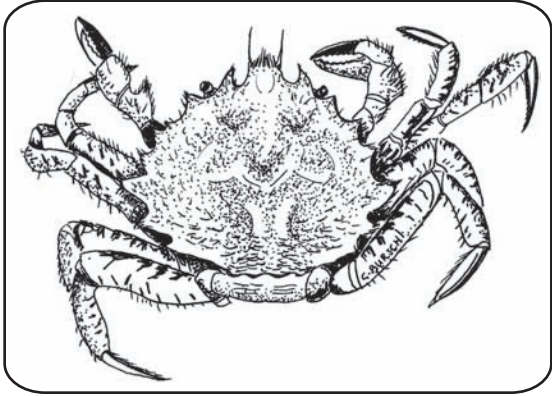




# Crab identification guide

## Invasive crab monitoring project



### Helmet or horse crab

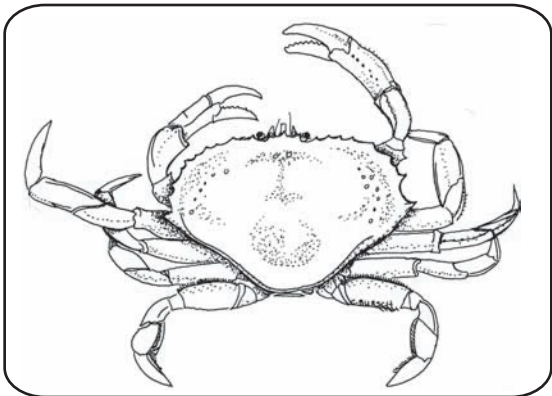
*Telmessus cheiragonus*

Six large jagged teeth on each side of the carapace

Entire body covered with stiff bristly hairs

Frontal area protrudes past eyes

Up to 10 cm across carapace



### Dungeness crab

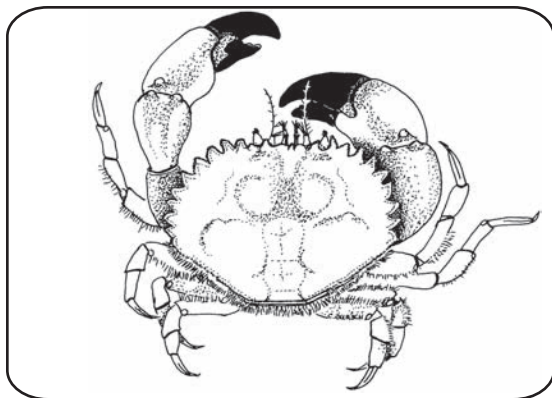
*Cancer magister*

Broadly oval, uneven carapace with ten teeth, widest at the 10th and final tooth

Narrow frontal area with five unequal teeth

Light-colored leg tips

Up to 25 cm across carapace



### Pygmy cancer crab

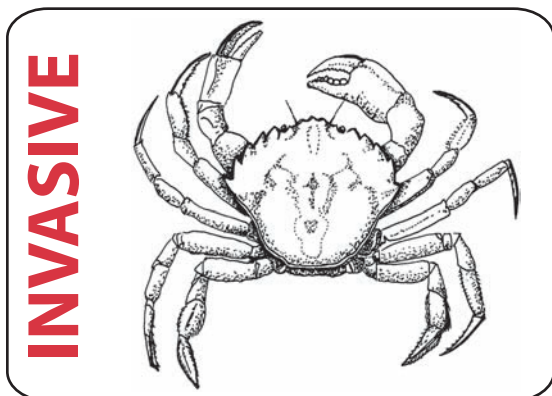
*Cancer oregonensis*

Large claws, tips black

Carapace nearly circular in outline, widest at 7th or 8th tooth

Legs very hairy

Up to 3.8 cm across carapace



### European green crab

*Carcinus maenas*

Five teeth on each side of the carapace

Three rounded lobes between eyes

May or may not be green in color



Kachemak Bay Research Reserve - Download this product at: [www.kbayrr.org](http://www.kbayrr.org)

ADF&G administers all programs and activities in compliance with state and federal civil rights and equal opportunity laws. Obtain the full ADF&G and Americans with Disabilities Act and Office of Equal Opportunity statement online at [www.adfg.state.ak.us](http://www.adfg.state.ak.us) or from the ADF&G Public Communications Section at 907-465-6166. 11/2012