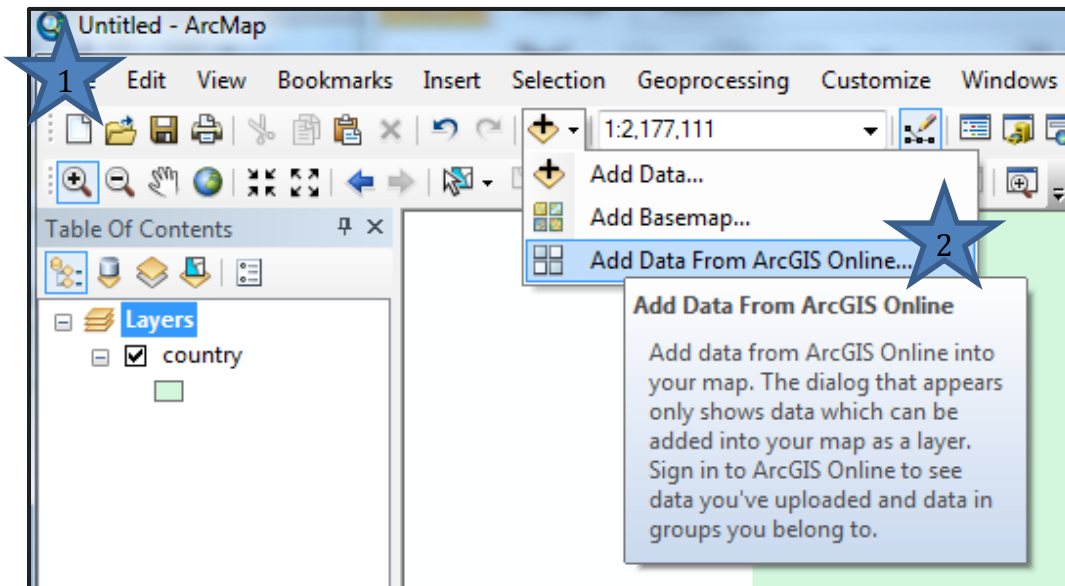


## Instructions for accessing AKOATS in ArcGIS

- 1) Open ArcMap
- 2) From the File menu, choose ArcGIS Online



- 3) Enter AKOATS in search box once ArcGIS Online dialog opens (blue box), click search button
- 4) Select data layer (AKOATS – Current)
- 5) Click “Add” to add it to your ArcMap project
- 6) You can analyze AKOATS data, combine with other data, add new or proposed sites

